



HEADQUARTERS
Ngong Road, Karen, P.O. Box 310, 00502
Nairobi, Kenya
Phone +254 (0) 711 063000
Fax +254 20 2765030

africanwildlife@awf.org
www.awf.org

2021 ANNUAL REPORT



VISION

An Africa where sustainable development includes thriving wildlife and wild lands as cultural and economic assets for Africa's future generations

MISSION

To ensure that wildlife and wild lands thrive in modern Africa

APPROACH

To engage and support leadership at all levels in their efforts to stabilize Africa's wildlife habitats, protect wildlife and wild lands, eliminate illegal wildlife trade, and ensure the development of Africa is inclusive and green

Letter from the CEO: A STRATEGIC EVOLUTION FOR AWF



Dear AWF Friends,

Conservation work happens in many spheres. There is the work on the front lines, where rangers risk their lives to protect wildlife from poachers, where the AWF-trained sniffer-dog teams ferret out illegal products, where communities use skills and knowledge provided by AWF to manage human-wildlife conflict. And then, there is the work that happens in meeting spaces, board rooms, and policy forums.

Given that one of AWF's primary strategic goals is to promote African conservation leadership, it's not surprising that some of our most impactful work happens behind the scenes. Advancing African-led conservation requires a seat at the table where development and investment decisions are made, and AWF has never been more frequently and meaningfully engaged with those who can make a critical difference for conservation in Africa. In places as varied as the African Union, U.S. Congress, and African village centers, we provide information, technical guidance, conservation perspectives, and knowledge gained over 60 years of work and innovation on the continent.

**“IT'S NOT SURPRISING
THAT SOME OF OUR
MOST IMPACTFUL
WORK HAPPENS
BEHIND THE SCENES.”**

Likewise, we're continuing to elevate our profile as a convener of parties that impact conservation in Africa. For example, we're currently co-organizing the continent's first pan-African protected-areas conference. This landmark event should help create a unified conservation vision for Africa and new ideas for shaping global conservation investment and action.

We recently welcomed two former heads of state to our Board of Trustees: H.E.

Hailemariam Desalegn Boshe, former prime minister of Ethiopia, and H.E. Issoufou Mahamadou, former president of Niger. Not only are they supporting AWF and its mission as trustees, but they also are stepping up to be champions for the continent, as patrons for the Africa Protected Areas Congress. In this they join another esteemed AWF trustee, H.E. Festus Mogae, former president of Botswana.

There is no doubt, it is an exciting time to be at AWF. We're delighted that our sphere of influence and network of collaborators is evolving



Kaddu (left) and AWF Trustee H.E. Mahamadou Issoufou (far right), with a translator, visit land-restoration sites in President Issoufou's hometown in Niger. ©AWF

in new ways. This evolution is in line with our vision to help mobilize an African-led conservation movement that will model for the world how conservation and development can be achieved in harmony.

I hope you'll feel inspired by the stories in this report that expand on the ways in which AWF is working—on the front lines and behind the scenes—to ensure wildlife and wild lands thrive in modern Africa. Thank you for being part of our vital community of supporters. Together you are a linchpin in our fight to protect Africa's priceless natural heritage.

Sincerely,

Kaddu Sebunya
AWF Chief Executive Officer

AWF engages leaders from all levels of government, civil society, and the private sector to ensure African perspectives, from the community level on up, help shape global conservation agendas, and that those agendas lead to results on the ground. Our efforts include partnerships with young people, who represent Africa's largest demographic and are its most energized conservation champions.

Toward a unified conservation voice in Africa

AWF seeks to elevate African conservation voices in order to ensure successful and lasting conservation outcomes. Africa's governments, protected-area managers, communities, and private-sector members have the most at stake when it comes to the loss of African wildlife; therefore, it is Africans who must own and be meaningfully engaged in conservation work.

As an African organization, AWF is best positioned to convene key constituencies to advance conservation goals. In 2021, we were central to developing new conservation coalitions that herald a new day for conservation in Africa, one in which diverse parties collaborate to speak to the global community with one voice. The most notable of these initiatives was the development of the first-ever Africa Protected Areas Congress.

In 2019, the International Union for Conservation of Nature invited AWF and the Rwandan



Kaddu gives opening remarks at a weeklong convening of the African Protected Areas Directors forum. ©AWF



1

government to co-host and co-organize the Congress. The event will be the first continent-wide gathering of African leaders, citizens, businesses, and interest groups to discuss the vital role of protected and conserved areas in safeguarding nature and promoting sustainable development in Africa.

The Congress's primary objective is to define a **unified vision** for the role protected and conserved areas play in Africa's future. "We seek to deepen the understanding of the role that national parks and other protected areas play in protecting biodiversity and vital ecosystem services. The water we drink, the forests and their plants that provide our medicines, Africa's cultural legacy—all reside with protected and conserved areas," said Fred Kumah, AWF's vice president for global leadership.

One hoped-for outcome of the Congress is a commitment by governments to ensure ecological connectivity across Africa's protected areas as a critical strategy for long-term biodiversity protection and, ultimately, human well-being.

The Congress is set to be held in Kigali, Rwanda, July 18-23, 2022. With this inaugural gathering, Africa joins other regions and the global community in coalescing around protected



2

areas. Similar congresses in other parts of the world and the IUCN World Parks Congress help set conservation agendas for decades and provide valuable opportunities for protected-area authorities to unite around shared interests.



3



4

1,2: Preparatory event for inaugural Africa Protected Areas Congress ©AWF 3: H.E. Hailemariam Desalegn is a patron for the Congress, along with two other former heads of state and fellow AWF trustees, H.E. Issoufou Mahamadou and H.E. Festus Mogae. ©AWF 4: Jeanne d'Arc Mujawamariya, Rwanda Minister of the Environment ©AWF 5: Protected-area directors workshop ©AWF



5

Africa Protected Area Directors

The Africa Protected Area Directors forum brings together the leaders of the national park systems of every African country to:

- Support protected-area managers as they address loss of revenue due to tourism stoppages and other challenges presented by COVID
- Develop a common agenda for protected areas
- Support protected-area directors' engagement with the Africa Protected Areas Congress
- Facilitate collaboration and information sharing, especially regarding best practices in protected-area management

The forum includes members from all 54 African countries and is currently co-chaired by Rwanda and Zimbabwe. Members have identified a lack of sustained funding as their primary challenge, a lack that was especially acute during COVID. They've rallied behind a revolutionary step, the creation of a Pan-African Conservation Trust (A-PACT), which would create sustainable financing means for all 8,552 protected and conserved areas. The mechanism proposed is a hybrid trust fund with an endowment to cover essential management costs, a revolving or sinking fund to support innovation and emergency responses, and an investment vehicle to support business plans that deliver a return such as tourism developments or access to carbon markets.

African civil society

In 2020, AWF initiated a pan-African leadership platform, the African Civil Society Organization Biodiversity Alliance, to define an African **civil society agenda** for upcoming negotiations at the **Convention on Biological Diversity (CBD)** and the **World Conservation Congress**. AWF's policy team under VP Fred Kumah's leadership played a significant role in forming and coordinating the group, which consists of over 80 African organizations.

Throughout FY21, the Alliance facilitated dialogues with CBD negotiators from the African Union, European Union, the Chinese Civil Society Alliance for Biodiversity Conservation, Africa Development Bank, and the Green Environment Facility of the World Bank, among others. The overarching goal of these and similar convenings is to develop and promote an African vision for protected and conserved areas and biodiversity protection that will **help shape conservation policy and practice on the continent as well as global investment**.

The African civil society groups are also helping to directly shape conservation policy. In FY21 they gave feedback on bills such as the U.S. Global Wildlife Health and Pandemic Prevention Act—legislation that may originate outside Africa but ultimately impacts conservation on the continent.



1



2



3

1: African CSOs Biodiversity Alliance members at the World Conservation Congress 2: Andrea Athanas represents AWF at the Congress. 3: Najib Balala, Kenya's Cabinet Secretary for Tourism and Wildlife, speaks to Kenyan delegation. 6: Elizabeth Maruma Mrema, executive secretary of the Convention on Biological Diversity, and AWF's Jia Qiao at the 15th Conference of Parties to the Convention. All photos ©AWF



4



5



6

ENGAGING CHINA

As Africa's leading foreign investor, China significantly impacts the continent's economy and environment. To help ensure that Africa's relationship with China benefits the African people and promotes conservation, AWF engages Chinese entities working in Africa and links them with African conservation leaders. Our networking and outreach extend to **Chinese and African governmental representatives, civil society organizations, youth, private-sector operations, and the Chinese public**.

In FY21, AWF facilitated dialogues between Chinese negotiators to the **Convention on Biological Diversity (CBD)**—a treaty that significantly influences global conservation policy and investment—and the **African Group of Negotiators**. The latter is an alliance of African member states representing the continent's interests in international environmental negotiations. The Chinese team of about 20 negotiators engaged with representatives from South Africa, Eswatini, Uganda, Ethiopia, Malawi, and other countries. We also linked African and Chinese **civil society groups** in critical discussions about outcomes they would like integrated into the Global Biodiversity Framework, which is the updated CBD strategy. "By fostering conservation-led

dialogues and exchanges among African and Chinese policy makers, civil societies, and youth, we hope to reinforce a shared vision that embraces conservation for sustainable development in modern Africa," said AWF's Jia Qiao, manager, external relations, China.

In October 2021, Qiao represented AWF during the first phase of the **Conference of Parties** to the Convention on Biodiversity in Kunming, China, where the world's leaders affirmed their political commitments to reversing biodiversity loss.

Since April 2020, AWF and Friends of Nature, a leading Chinese environmental civil society organization, have held three virtual dialogues between African and Chinese youth, gathering their perspectives on a range of conservation topics. (See page 12.) "With COVID-19 restrictions being lifted, we now hope to hold face-to-face conversations," said Qiao. "I see a lot of potential for building out this dialogue platform. We can come up with initiatives to help influence policymakers' decisions or strategies on conservation to positively impact Chinese investment in Africa, and to collaborate on capacity-building through, for example, training youth."

Sensitizing consumers to the realities of wildlife trade

China is one of the world's leading markets for trafficked products such as pangolin scales, ivory, and rhino horn. AWF works to generate greater awareness of the potentially irreversible destruction caused by illegal wildlife trade. Since 2018, we've reached the Chinese public through **partnerships with zoos**, beginning with the Beijing Zoo, which receives millions of visitors each year. We also organized an exhibition at the Shanghai Zoo, China's second largest. *Building a Shared Future for You and Me: Safeguarding Africa's Threatened Biodiversity* has a compelling message — that every individual can help secure a positive future for African wildlife by refusing to buy illegal wildlife products and spreading the word about species endangerment. Alongside the initial exhibition, AWF staff members have **visited Shanghai schools** and led **conservation awareness sessions with over 1,000 Chinese youth**. Back at our Nairobi headquarters, we regularly host visiting Chinese high school and college students interested in conservation and African wildlife.



1



2



3

1,2: AWF exhibit at Shanghai Zoo 3: Students from Kunming, China visit AWF's Nairobi headquarters. 4, 5: Supported by AWF, the Vhembe Biosphere Reserve Youth Network and South African Youth Biodiversity Network host a capacity-building workshop for youth leaders. 6: Workshop and dialogue for youth leaders
All photos ©AWF



4



5



6

ENGAGING YOUTH IN CONSERVATION

With a median age of 19 and approximately 70 percent of its people under the age of 30, Africa is the world's youngest continent. It's projected that by 2050, two of every five births will be in Africa. In light of such explosive population growth as well as the continent's rapid development, it's imperative that African youth advance conservation and effect inclusive, green development. AWF's **Youth Leadership Program** works with various groups to increase the influence of young Africans in national, regional, and international biodiversity forums and negotiations. We also help young conservation leaders develop their leadership skills and further some truly innovative conservation projects.

According to Simangele Msweli, senior manager of the program, today's young leaders counter the complexity of conservation issues with diverse

and innovative solutions. For instance, the AWF-supported **Top 100 Young African Conservation Leaders** head a wide range of marine and terrestrial projects, from ecotourism businesses in Tanzania to apps that map illegal-waste sites in Kenya to toolkits for wildlife crime prosecution in Zimbabwe.

"The Top 100 contest is connecting these young conservationists to each other and in the process strengthening youth-led conservation in Africa," Msweli says. Importantly, the leaders gain recognition as role models and experts, inspiring others like them. They also receive new funding opportunities to grow their work.



Creating relationships globally

AWF's efforts to bridge gaps internationally extend to **civil society groups** like Friends of Nature, a China-based organization, and we plan to facilitate similar discussions for youth organizations in North America. In FY21, AWF facilitated several **youth dialogues between African and Chinese youth** on various biodiversity-protection themes, including climate change mitigation, the role of Indigenous people and local communities in conservation, and, critically, the guiding priorities of the post-2020 Global Biodiversity Framework (the updated Convention on Biological Diversity strategy).

Bringing young people into international policymaking requires building their technical and leadership capacity, a cornerstone of AWF's youth leadership programming. For Msweli, this precondition helps create a pipeline of skilled and informed young people ready to take up leadership roles in policy. "If we wait until someone has enough experience working for government, for example, it means there is a gap during which they are not being as effective," she says.

Our youth engagement strategy also addresses gaps in conservation education, providing practical experiences designed to trigger active participation and reflection. **Partnering with the African Leadership University**, AWF provides internships for undergraduates and capstone research opportunities for MBA students at the university's School of Wildlife Conservation.

Elevating voices on the global stage

Through **workshops and forums** with youth networks and civil society groups, AWF links young people from different regions while fostering greater awareness of the factors impacting biodiversity protection on the continent. In the lead-up to one of conservation's most important policy negotiations, the Convention on Biological Diversity (October 2021 and April 2022), this common understanding has been powerful.

Since 2018, AWF has facilitated workshops for country representatives of the **Global Youth Biodiversity Network**, the official youth delegation to the convention, to help them develop regional positions and prepare for deliberations. In 2021, we supported workshops for the network's chapter in the Democratic Republic of the Congo and connected the chapter with the country's leading policymaker, who is chair of the African Group of Negotiators and represents Africa's interests at the convention.

1-3: Under the guidance of AWF's Simangele Msweli, youth conservation leaders meet to discuss goals related to policies and global agreements such as the Convention on Biological Diversity. All photos ©AWF

AWF LEADERS

Meet AWF youth leader Simangele Msweli

All through her studies at the University of KwaZulu-Natal in South Africa, Simangele Msweli yearned for more hands-on approaches so her advanced degrees in biological sciences could translate to real-world conservation solutions. That's why AWF's new partnership with the African Leadership University is so close to her heart. "We are working with MBA students as researchers," she says, "and their insights will shed light on so many topics, including the potential of biodiversity-friendly businesses, many of which will be youth-led."

Msweli grew up near the iSimangaliso Wetland Park, a coastal World Heritage Site. She ventured into conservation policymaking as a recipient of a grant to attend the high-profile Conference of Parties to the Convention on Biological Diversity in India in 2012. Nineteen years old at the time, she joined the youth delegation to the convention, as part of a smaller group representing the youth-mobilization platform Go4BioDiv. It was at this conference that she learned of and joined the Global Youth Biodiversity Network. She quickly felt that young people should mobilize at national levels as well as global to be the most effective. In 2017, Msweli co-founded the South African Youth Biodiversity Network, a nonprofit that strengthens the political contribution of South African youth to the convention and supports grassroots conservation projects. As a steering-committee member of the global youth network, she has organized various conservation capacity-building initiatives, including an intensive convention-prep workshop at AWF headquarters in 2018.

Now, she leads AWF's Youth Leadership Program. Since joining AWF in January 2021, she has represented us at public lectures and moderated high-level panel discussions at international forums like the 2021 European



Development Days. Having served as a lecturer at her alma mater, she appreciates the opportunity to reach new audiences in diverse regions and recognizes her role as a vote of confidence. "To be entrusted with this responsibility shows that AWF is actually walking the talk when they say they're supporting leadership for young people," she says.

Looking back at her previous job at WildOceans, where she worked with rural communities around iSimangaliso Wetland Park, she reflects on her journey: biology to policy to people. "AWF has been amazing because it's where it all comes together. The position allows me to make use of this experience for a greater good."



1: AWF-trained canines at a police checkpoint
 ©AWF 2: Contraband samples used in AWF counter-trafficking trainings ©AWF

FORMING A BIPARTISAN BIODIVERSITY COALITION

The COVID-19 pandemic heightened awareness of the link between public health and unchecked exploitation of wildlife and the natural environment, giving conservation policy and legislation a higher profile. AWF in FY21 stepped up to contribute to and support several important bills that address conservation of endangered species, wildlife trafficking, future pandemic prevention, and rights-based conservation approaches.

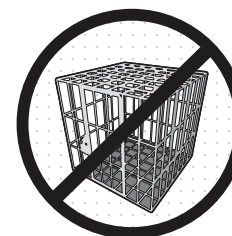
AWF worked closely with Senators Chris Coons (D-DE) and Rob Portman (R-OH) to ensure development of the bipartisan Eliminate, Neutralize, and Disrupt (END) Wildlife Trafficking Reauthorization and Improvement Act of 2020. We participated in and organized congressional briefings, meetings, and roundtable dialogues, allowing for African experts and government officials at the forefront of combating illegal wildlife trade to share insights and experiences directly with members of Congress.

The Act aims to continue the whole-of-government approach to ending illegal wildlife trafficking. In November 2020, AWF's Didi Wamukoya, director of Counter Wildlife

Trafficking, served on a panel of experts who identified the successes associated with the END Act of 2016 and areas needing improvement. The act expired at the end of 2021, and the new bill is an update.

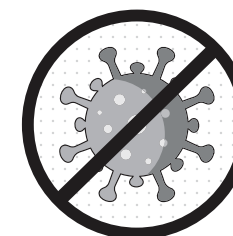
The 2016 END Act has helped AWF and partner governments create and implement cutting-edge programs designed to disrupt the illegal wildlife trade, including programs that place highly skilled detection-dog teams in transport hubs to sniff out illegal wildlife products. The bill has also supported AWF's push to comprehensively review wildlife laws in Kenya and Uganda, augmenting the countries' crackdowns on wildlife crime. These efforts contributed to the removal of Kenya and Uganda from the "Gang of Eight" countries notoriously known for high levels of wildlife trafficking. Finally, END Act funds have supported AWF's prosecutorial training program.

Working through partnerships such as the International Conservation Caucus Foundation and coalitions such as the Wildlife Trafficking Alliance and Alliance for Wildlife and Health in Washington DC, AWF provides insights to members of Congress through feedback on draft bills, roundtable discussions, testifying in hearings, grassroots advocacy, and briefs.



Global Wildlife Health and Pandemic Prevention Act

Aims to keep at-risk species out of wildlife markets as a measure of protection against future zoonotic outbreaks. AWF's accompanying online advocacy campaign garnered nearly 29,000 signatures.



Global Wildlife Trade Biosecurity Act of 2020

Would create a Global Zoonotic Disease Task Force to oversee the federal government's response to disease outbreaks. It also contains measures to prevent future outbreaks, including strategies for effectuating food security, global health, biodiversity protection, and decreased demand for wildlife consumption.



Big Cat Conservation Act of 2020

Revises requirements governing the trade of big cats (lion, tiger, leopard, cheetah, jaguar, cougar or any hybrid of these species). Specifically, it revises restrictions on the possession and exhibition of big cats, including restrictions regarding direct contact between the public and big cats. It amends the Lacey Act of 1981.



Securing FY22 funds for biodiversity conservation

In April 2021, AWF called on Congress to increase funding for a variety of vital conservation programs, including the multinational species conservation funds, biodiversity programs, counter-wildlife-trafficking, and more. AWF's community of advocates stepped up to support by sending more than 12,000 messages to their legislators.

Engaging with communities in priority conservation landscapes such as Faro in Cameroon is where AWF fulfills its commitment to collaborative conservation with community benefit. Taking a holistic view and a pragmatic approach, we work to create conservation gains while directly benefiting people through improved conservation capacity, human-wildlife conflict mitigation, and support for sustainable enterprise.

AWF large landscape: Faro, Cameroon

Located in Northern Cameroon, Faro National Park is an essential savanna ecosystem bordering the Rivers Faro and Deo to the north and east, Nigeria to the west, and the Adamawa region to the south. The larger 344,249-hectare Faro landscape (1,329 square miles) is home to diverse wildlife, including elephants, cheetahs, hyenas, and the largest hippo population in Central and West Africa. Threats to wildlife are commercial poaching, unmanaged transhumance (seasonal cross-border livestock movements), illegal fishing, and severe climate-change impacts.

AWF's extensive experience across Africa positions us to engage and work effectively with diverse partners and stakeholders in government and

Tchamba community leader
Mohamadou Ahmadou organizes
awareness campaigns to mitigate
overgrazing impacts around Faro
National Park. ©AWF



1

local communities to shape a more sustainable and resilient future for people and wildlife. In the Faro landscape, we support the government in protecting wildlife and managing the park and surrounding area while we ensure that local and Indigenous people are deeply engaged in conservation activities that provide community benefit. With funding from the European Union, AWF delivers a holistic conservation program that incorporates participatory land-use planning, capacity building in protected-area management, training in counter-wildlife-trafficking, mediation of community conflicts related to transhumance, microenterprise development, and environmental education.



2

1: Livestock herd in Faro landscape **2-5:** AWF ensures that local and Indigenous people are deeply engaged in conservation activities that provide community benefit. **6:** AWF facilitates participatory mapping with community members in Faro. All photos ©AWF



3



4



5

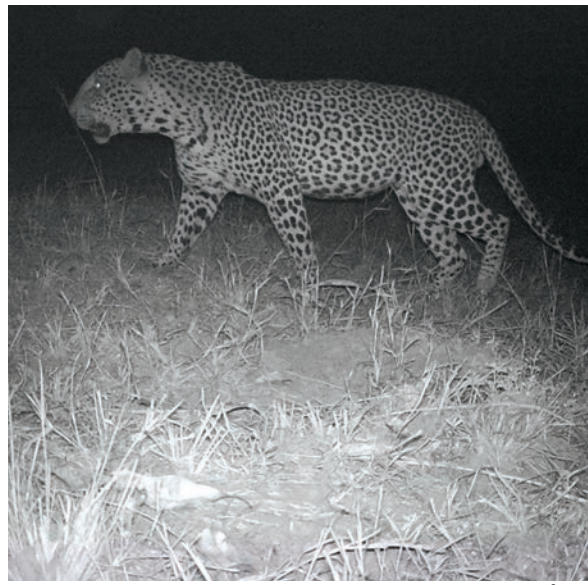


6

Landscape management

Land use plans developed with support from AWF's Conservation Geography team represent collaborative, highly transparent processes that support the project's main objective, protecting the Faro ecosystem by improving natural-resource management for the benefit of both wildlife and communities. These land-use plans guide conservation objectives and activities in the landscape and, by demarcating zones for specific uses such as agriculture, help mediate disputes over access to resources.

Landscape management informed by collaborative planning is especially critical in the face of instability related to climate change. Growing resource scarcity has led to conflicts among herders, gold miners, farmers, fishers, and those who harvest non-timber forest products. The different groups vie for pastures, ores, water, food, and land, putting an unsustainable level of pressure on the forest. But AWF works with partners to advance strategic solutions. For example, in August 2021, we supported community members in digging artificial wells for tree nurseries, removing invasive plants, and treating seeds on a community farm to improve crop yield.



Transhumance management program

Transhumance refers to the practice of moving livestock from one grazing ground to another in a seasonal cycle—a long-held tradition. It is one of the greatest challenges in the Faro landscape, as herders from other parts of Cameroon and neighboring countries crisscross through the landscape to graze cattle, a practice that can severely degrade wildlife habitat and create conflict with area people. AWF helps address this problem by convening transhumant herders, local communities, and authorities to agree to grazing patterns and mediate conflicts over land rights. We also help sensitize herders to laws governing land use and present alternatives to harmful grazing practices. TANGO Team, a new AWF-supported outreach unit of local herders, communicates these messages to transhumant herders in public spheres like marketplaces.

Ranger & community scout support

AWF has helped build Faro National Park rangers' anti-poaching capacity, providing tracking technology and training in best practices as well as building systems for monitoring and mitigating biodiversity threats. We also helped build a community-scout unit on the park's borders to protect against incursions by poachers and monitor the parks' significant hippo population.

In FY21, we also installed over 40 camera traps in various sections of Faro National Park to improve wildlife monitoring. The motion-triggered camera traps captured images of different antelope species as well as the forest buffalo, smaller in size than the better-known Cape buffalo and known to travel in much smaller herds. The images captured provide vital information that can help park managers better protect species and more efficiently deploy resources such as ranger patrols.

Microenterprise project

To help reinforce food security in the landscape, the European Union-funded project has enabled local people from Cameroon's Tchamba District to develop microenterprises in beekeeping. In 2021, the beekeepers increased their honey harvests and expanded their inventory of hives. Along with improving incomes, such projects foster trust in AWF and strengthen our relationships with government and private-sector partners as well.

Environmental education

AWF recognizes the long-term impact conservation education has on communities, especially those near protected areas. In the Faro landscape, we deliver education through activities like school trips to the park and community tree-planting days. In FY21, we partnered with Ecole de Faune de Garoua, or Wildlife College of Garoua, to launch "Operation Reforest Faro," which distributed 2,000 indigenous tree seedlings to students and families in three area villages. Students who later took good care of their trees received scholarships covering school fees and books. During the two-day event, participants gave the project a new name that speaks to the range of community engagement: "One Student, One Tree; One Teacher, One Tree; and One Household, One Tree."

AWF's Community Development Officer for Faro Adamou Aboubakar, said, "We've seen great progress in the commitment and involvement of partners and stakeholders within the landscape — especially from schools, traditional rulers, and civil society organizations. Involving students will go a long way toward preparing future conservation champions."

1: Community meeting around issues related to transhumance 2: Camera traps give park managers helpful info about species presence and movements. 3: Capacity-building session for ecoguards and outreach workers in Faro 4: Tchamba beekeeper with honey harvest 5: Tree-planting day All photos ©AWF

PROMOTING GREEN GROWTH ACROSS AFRICA

As human populations grow, so does the need for infrastructure and agriculture, pressing into habitats and threatening local biodiversity. In Tanzania, Uganda, the Democratic Republic of the Congo, and Cameroon, AWF's sustainable agriculture programs balance the needs of people and wildlife by accounting for everyone's priorities.



Mushrooms in Bwindi, Uganda

Uganda's Bwindi Impenetrable Forest is known for mountain gorillas, not mushrooms. Almost half the global population of the endangered subspecies resides in the park, along with chimpanzees, elephants, and over 300 species of birds.

But in addition to this iconic species, the landscape is becoming known for a new kind of food crop, mushrooms. In September of 2020, AWF's Uganda team launched a project designed to **build resilience against the loss of livelihoods caused by shutdowns related to COVID-19**. The project has offered area people capacity-building and enterprise support in mushroom growing, including technical assistance for the construction of four mushroom grow rooms.



Better seeds for farmers in Bili-Mbomu, DRC

In the Northern Democratic Republic of the Congo, the Bili-Mbomu Protected Area Complex is a crucial habitat for the largest population of endangered eastern chimpanzees and one of the region's last remaining habitats for critically endangered forest elephants. The area is under threat from poaching, poisoned water from illegal fishing, artisanal gold mining, and slash-and-burn agriculture.

With support from the U.S. Agency for International Development, AWF in 2018 launched a community development program focusing on enhancing community resilience while improving biodiversity protection. The program's current priorities are sustainable agriculture, participatory mapping for community land-use planning, and developing a committee for community input in local conservation measures.

In 2020, AWF **exposed 540 people from 60 households to sustainable agriculture techniques** designed to improve productivity while benefiting the environment. The activities included distributing upgraded seeds and introducing techniques of crop rotation. AWF also helped farmers repurpose their farms to establish seed fields and school fields—extending the program's benefits via demonstration. These school fields are subdivided plots that allow farmers to practice new cultivation techniques on a smaller scale.



Beehives in Faro

The Faro landscape in Cameroon is harshly afflicted by the impacts of climate change. Competition for pasture, water, and food has intensified as a result. In response, AWF has supported **beekeeping projects**—supplying hives and equipment—alongside other sustainable livelihood initiatives in the landscape. (See "Faro Landscape" page 16.)

1,3: Mushroom farming and beekeeping help build community resilience in Bwindi (Uganda) and Faro (Cameroon), respectively. **4:** Successful harvests allow beekeepers to build more hives. **5:** A traditional log hive **6:** Potential cocoa investor
All photos ©AWF



Rice & cocoa in Kilombero, Tanzania

Tanzania's Kilombero Valley in Southern Tanzania is a vital ecosystem and the country's breadbasket. But climate change is wreaking havoc here—farmers are experiencing seasons with decreased rainfall, heat waves, and drought, leading to crop failures. To cope with the loss, farmers are expanding their working land, eroding the surrounding habitat.

To lessen the community's impact on the land, AWF has engaged **2,000 farmers in a model inclusive green growth project**. In partnership with the Global Fund for Nature and with funding from the German government's Federal Ministry for Economic Cooperation and Development, the project has enabled rice and cocoa farmers, many of them women, to increase their harvests by 36 percent and 28 percent, respectively. (Studies have shown that empowering women in conservation yields the greatest benefits for communities.)

The farmers use higher-yield seeds, less water, less land, and improved farming techniques to boost productivity and profit. AWF also provides guidance as the farmers upgrade infrastructure and develop business plans.

In addition, AWF works closely with community members to reforest this vital landscape. So far, we have supported the planting of more than 100,000 seedlings along rivers, in forest reserves, and alongside cocoa bushes to provide shelter for the all-important cocoa plants.



1



2



3



4



5

HUMAN-WILDLIFE CONFLICT MITIGATION & PREVENTION

As Africa’s human population grows, people and wildlife find themselves in closer proximity, leading to more frequent and intensified human-wildlife conflict. These potentially lethal conflicts often occur in areas where agricultural activity and human settlement near or encroach upon protected areas or wildlife migration and dispersal areas outside protected areas.

AWF’s proven interventions designed to prevent human-wildlife conflicts can be lifesaving for people and wildlife, stopping retaliatory killings of wild animals, protecting vital crops, and allowing a more peaceful coexistence.

AWF addresses human-wildlife conflict in **targeted large landscapes** through varying strategies that reflect the unique ecologies of each landscape and the needs and activities of human communities.

One of our most common and effective solutions is **training wildlife rangers and village scouts in human-wildlife conflict awareness and mitigation strategies** that they can employ as mediators and share within villages. In our training, we share the tenets of AWF’s rights-

based approach, which is underpinned by global human rights standards. AWF also sensitizes communities to conservation realities, including the importance of wildlife to the maintenance of healthy ecosystems that provide critical resources such as water.

Marauding elephants can wipe out a family’s food crops, destroying months of hard agricultural work and putting family well-being at risk. In Kenya in FY21, AWF and the Kenya Wildlife Service identified six human-elephant conflict hotspots within the Tsavo ecosystem and facilitated meetings with community stakeholders to discuss and demonstrate mitigation strategies. We also **trained 240 farmers** in solutions such as using light and noise to deflect approaching elephants. AWF also provided the needed tools — pressure horns, torches, and firecrackers.

An AWF-supported **rapid-response team** in Tsavo handled 48 human-elephant conflict incidents between November 2020 and April 2021. The team, which works with the Kenya Wildlife Service, led the elephants out of village areas back to protected areas where they would be safe from retaliatory violence.

1: Ugandan chili farmer 3,4: Handing over equipment to help rangers and the community around Amboseli mitigate human-wildlife conflict 5: © Paul Runze / PCRIimages.com. All other photos ©AWF

In Murchison Falls and Kidepo Valley, Uganda, we’ve trained 380 farmers in **chili farming**, protecting farmlands from elephant invasion while providing sustainable livelihood opportunities. The pungent crops are a non-lethal method of repelling elephants while also helping farmers diversify their incomes, thus building community resilience.

In Zimbabwe’s Mbire district, AWF has helped chili farmers access seedlings, farm inputs, and markets for their crops. Seeing the success of the project’s pilot phase, other farmers in the area have invested their own resources into chili growing, hoping to realize **improved incomes** as well as keep elephants at bay. “The use of chili has proven to be sustainable, cost-effective, and easily adopted by households,” says Collen Matema, AWF’s natural resources management officer in Mbire. The farmers burn chili blocks to ward off elephants and also find it effective to use fence roping dipped in chili oil.

Lion collaring

Lions have a high profile when it comes to human-wildlife conflict. In FY21, we facilitated a lion collaring exercise at LUMO Wildlife Conservancy in Tsavo. The data collected from the GPS-enabled collars transmit to the park managers and provides information about how cats use the space and where they overlap with livestock or human presence. This information helps shape land use plans and the development of conflict mitigation measures. “We need to make sure that people live harmoniously with wildlife and appreciate that wildlife conservation is to their benefit,” says AWF’s landscape ecologist in Tsavo-Mkomazi, Kenneth Kimitei.



AWF's right-based conservation policy

The collaborative approach taken in Cameroon is essential to AWF's work throughout Africa. But while AWF has strived to promote community conservation engagement and ownership from its first days, we didn't codify these values until 2020, when we released a new, board-approved *Policy and Standard for Rights-Based Conservation*.

Among other provisions, this model human-rights code stipulates AWF will fully collaborate with local communities and Indigenous peoples in conservation planning and implementation, operating within a "framework of partnership and solidarity." The overarching commitment—fleshed out in the document with carefully developed principles, criteria, and indicators—is "to respect, protect, and promote human rights at all times, irrespective of ethnic group, gender, race, sexual orientation, age, or class, by adopting a rights-based conservation approach."

CONSERVATION FOR COMMUNITIES, BY COMMUNITIES

Hazelnut, bush mango, honey, cocoa. In communities in and around Dja Faunal Reserve and Campo Ma'an National Park in Cameroon, these products help solve challenges both to conservation and community well-being. AWF empowers communities around Dja and Campo Ma'an with conservation education and alternative livelihood training and assistance, putting community-led conservation into action.

AWF has worked in Campo Ma'an since 2017, supporting wildlife protection and helping improve the livelihoods of nine Indigenous communities within and around the protected area. In addition, AWF has introduced more sustainable agricultural practices and helped women move into industry in non-timber forest products like bush mango and Marantaceae leaves.

Between 2020 and 2021, AWF helped area women increase the quality and quantity of their non-timber forest products and survey markets and competitive pricing, resulting in higher

income. Despite the impact of COVID-19, the participating women saw a 70 percent revenue increase. In addition, all nine communities received high-quality agricultural seeds and materials to establish an average of 18 hectares of food crops.

North of Dja Faunal Reserve, 21 other villages are also finding success with non-timber forest products. Traditional but unsustainable activities like bushmeat hunting are a significant income source in this area, due to a lack of economically viable options. AWF has stepped in to offer alternatives that are more sustainable and more profitable. Conservation and livelihood-improvement training in these villages resulted in a 25 percent increase in income for 350 people between 2017 and 2020, with the third year carrying a 35 percent increase. We expect 2021 final data to show even more significant income growth for the cocoa producers and forest-product collectors.

Community conservation rights

Since its inception, AWF has promoted the well-being of people alongside wildlife. Community-led conservation under a rights-based approach is the only sustainable future because it allows human beings, who have a right to ownership of their natural resources, to thrive. For AWF's Senior VP of Conservation Strategy, Knowledge Management, and Impact Charly Facheux, this means full collaboration and solidarity with Indigenous peoples, local communities, and women—partnerships in which local people are not "just in the room," but involved in decision-making.

Natural resources are not just materially beneficial—they carry significant cultural heritage for communities across Africa, and it is the communities' right to lead conservation efforts. These capacity-building initiatives prove that conservation, human rights, and economic equity are not at odds—in fact, they are inseparable.

1: To strengthen food security around Campo Ma'an, AWF provided agricultural inputs including maize seeds. **2-3:** Non-timber forest products **4:** Kasigau community scout graduation ceremony
All photos ©AWF

AWF's holistic species protection efforts focus on three areas: protecting wildlife in situ (in their natural habitats), fighting trafficking through a suite of programs that target wildlife crime at every stage, and reducing demand around the globe for illegal wildlife products.

Counting wildlife

Counting animals for a wildlife census is not as simple as it might sound. The area covered is expansive, the terrain frequently troublesome and unaccommodating. And some animals are elusive and mobile, creating a risk of repeat counting. But getting an accurate count is as important as it is difficult. Designing conservation measures and assessing the effectiveness of those already in place require a thorough knowledge of a wildlife population's size, composition, and distribution in an area. Likewise, knowledge of human influences and threats to species is key.

In May 2021, AWF assisted the Kenya Wildlife Service in its **first countrywide wildlife census**. Patrols by air, ground, and water were combined with the examination of data from camera traps, radio collars, and ground surveys (to detect signs such as nests and animal droppings). Over three months, surveyors counted as many species as possible—large terrestrial and marine mammals as well as key bird species.



The census found more than 36,000 elephants in Kenya, a 12 percent increase from 2014. It also found the Tsavo ecosystem accounts for more than 37 percent of the elephant's range throughout Kenya and is home to nearly 15,000 elephants, highlighting the importance of this landscape. Such findings provide an invaluable overview of the state of Kenya's wildlife and help shape future conservation work.

Not all surveys are this large; in April, AWF's Simien Mountains team embarked on its own wildlife census in the Ethiopian national park, counting **Walia ibex** and the **rare Ethiopian wolf**.

The survey uncovered a wealth of information. The wolf's numbers have increased to 90, a 26 percent increase believed to be the result of reduced grazing pressures and habitat restoration. Unfortunately, ibex numbers had fallen from 865 in 2015 to 601. In good news, there were more adult females observed than other sex or age classes, pointing to the population's strong reproductive capability. Data showing declines leads to further investigation, particularly of causes, and determines the best course forward. With all we know, including the animals' locations, we can target effective interventions.

Wildlife surveys are carried out across African landscapes every day. **Camera traps**, with their remote sensing abilities, allow landscape managers to capture images of wildlife behaving as they would when not under the observation of people. Using camera traps allows AWF field teams to unobtrusively monitor wildlife, gathering information about population presence, abundance, health status, behavior, and habitat use.



1: AWF's Fiesta Warinwa engages Kenyan officials Najib Balala, Fred Segor, and Patrick Omondi as they pay a courtesy call during a large-mammal census at Tsavo. ©AWF 2: ©KevinDooley 3: ©Perrin Banks 4: ©Billy Dodson 5: Digital and electronic evidence training for rangers ©AWF 6: Eco-guards of the Lomako-Yokokala Wildlife Reserve at workshop focused on wildlife law enforcement techniques. ©AWF



SAFEGUARDING GIRAFFES

Sadly, giraffes have seen significant declines since the mid-1980s. Many people don't realize that in Africa today, there is roughly one giraffe for every four elephants and that giraffes face the threat of a "silent extinction." The leading threats to this iconic species include unsustainable (and illegal) bushmeat hunting, poaching, and habitat loss and fragmentation.

In FY21, AWF sought to **arrest giraffe declines in two critical strongholds**, the Maasai Steppe and Tsavo-Mkomazi cross-border landscape in Kenya and Tanzania.

Our multi-faceted approach includes working with wildlife authorities to:

- Strengthen ecological monitoring and the related data analyses and dissemination
- Support land-use planning and other activities that diminish the incidence of human-wildlife conflict
- Bolster counter-trafficking efforts through activities such as anti-poaching rapid response and court monitoring
- Promote community participation in giraffe and habitat conservation through involvement with conservancies and conservation enterprises such as tourism



Giraffe recovery plan in Kenya

AWF has partnered with the Kenya Wildlife Service to develop and execute the country's first giraffe recovery and action plan. The five-year strategy focuses on the three giraffe species found in Kenya (Maasai, Rothschild's, and reticulated) and calls for a holistic approach, including the interventions outlined above. Under this strategy, AWF is **mapping the threats facing giraffes** in Tsavo-Mkomazi, which will help park managers determine and prioritize interventions.

We also help **train and equip ranger forces** charged with safeguarding giraffes. For example, in September 2020, in the Tsavo landscape, we funded training for 50 community rangers from nine conservancies. The training focused on law enforcement, community relations, human rights, wildlife crime investigation, and human-wildlife conflict mitigation. In addition, we provided the rangers with food rations, uniforms, and boots. "The transformation in these rangers is phenomenal," said landscape manager Maurice Nyaligu during the scouts' graduation ceremony.

1: AWF and the Kenya Wildlife Service conduct a digital and electronic evidence training at the law enforcement academy in Taita Taveta County. ©AWF 2: Scouts from Kenya's Taita Ranch receive training in data-collection skills and other facets of wildlife law enforcement ©AWF 3: AWF's Benson Kasyoki leads an intensive 5-day learning exchange for court-monitoring teams in Ethiopia and the Democratic Republic of Congo. ©AWF 4: ©AnnieKatz

Ensuring wildlife crime is taken seriously

Threats to giraffes and other wildlife can include insufficient or lacking prosecutorial systems that fail to punish and deter wildlife crime. Specific problems include logistical challenges and poor witness testimony, which can derail prosecution. To help facilitate the appropriate prosecution of serious wildlife crimes, AWF has placed **court monitors** in the Tsavo-Mkomazi cross-border region (as well as the DRC and Ethiopia). These monitors support prosecutors in pre-trial processes, including assisting with evidence management and delivery and helping prepare witnesses—usually rangers—for trial. The cutting-edge project is one of only a handful in Africa and, to our knowledge, the most extensive court-monitoring program on the continent.

CONSERVING AFRICA'S ICONIC ELEPHANTS

In a new assessment of elephants' conservation status, scientists in 2021 again raised the alarm about the plight of African elephants. The International Union for Conservation of Nature now lists the African forest elephant (*Loxodonta cyclotis*) as "critically endangered" and the African savanna elephant (*Loxodonta africana*) as "endangered." Previously, the two were categorized as subspecies and listed as "vulnerable."

According to the assessment, Africa's savanna elephant population declined by at least 60 percent over the last 50 years, while forest elephants fell by more than 86 percent over the past 31 years. Poaching for ivory and loss of habitat are two of the leading contributors to the decline.



1

Holistic approach

Since AWF's first years, when it supported the field research of ethologist and conservationist Cynthia Moss in and around Kenya's Amboseli National Park, AWF has worked with scientists, wildlife authorities, and communities to protect elephants. Our efforts focus on capacity-building, community engagement, and providing resources to help parks **monitor elephant populations, conduct surveillance, and respond to poaching and trafficking.** We also seek to **reduce demand** globally for ivory or other elephant parts.

AWF also partners with governments and communities to **protect or expand habitat and critical corridors**, so elephants have room to disperse and roam. Virtually all of our large-landscape conservation benefits elephants as well as communities, integrating myriad activities such as **land-use planning, capacity-building in sustainable agriculture, microenterprise development, and human-wildlife conflict mitigation.**



2



3

Looking ahead:

In the future, AWF will continue to support our partner countries in developing species action and recovery plans. This work entails providing technical guidance during plan development and supporting activities such as wildlife censuses, human-elephant conflict mitigation training, and anti-poaching operations.



4



5



6

1: AWF supported the pioneering work of elephant researcher Cynthia Moss ©Cynthia Moss 2: ©Annie Katz 3: ©Barbara von Hoffmann 4-6: Three shots depicting eco-monitoring training for scouts. From top: Simien Mountains landscape (Ethiopia), cross-border Tsavo landscape (Kenya/Tanzania), and Bili-Uele (DRC). ©AWF

Building capacity in tracking & monitoring

In recent years, there has been an explosion of data from satellite imagery and field-data collection devices such as the smartphone. This bounty has transformed the quality and the amount of information available to monitor habitats and track conservation progress. **AWF trains forest rangers and scouts to use an app called "CyberTracker" to harness this data for conservation.** With just a few clicks, users enter important field observations on their ruggedized smartphones. The data collected is downloaded to SMART, the Spatial Monitoring and Reporting Tool, which helps parks manage patrol data.

The output can be critical for park managers as they prioritize anti-poaching patrols or decide where to focus protection against deforestation threats. Field data about the presence of animals or hunting camps now can be immediately useful for managing conservation areas and supporting law enforcement. In addition, the data can be integrated with other data sets, such as vegetation and forest cover, for further analysis and modeling.

Since 2014, AWF's Conservation Geography department, headed by ecologist David Williams, has **provided CyberTracker/SMART training and equipment in 27 sites, many extremely remote, across seven countries.** Equipment provided includes smartphones, software, laptops, and cameras.



PASSIONATE TEAM: AWF COUNTER-WILDLIFE-TRAFFICKING

You are a ranger on patrol at dusk, and you come across a poaching kill site. You investigate the carcass, note the nature of the animal's wounds, and, because nighttime is approaching, leave further analysis and processing for the next day. But the following morning, the carcass is no longer a teller of tales—hyenas have feasted, and now it will be impossible to demonstrate the method of attack. Your evidence is gone.

Such is the unique nature of wildlife crime and the kind of potential gap in wildlife law enforcement that AWF addresses through a **suite of projects and programs designed to counter wildlife trafficking** in Africa.

After habitat loss and fragmentation, trafficking is the most severe threat to wildlife, especially dire for endangered species such as elephants and rhinos. Experts estimate the illegal wildlife trade is worth US \$8-10 billion annually. AWF, founded in 1961, has decades of experience protecting Africa's wildlife through anti-poaching programs, but our involvement in other kinds of counter-trafficking is more nascent. In 2012, during a workshop at AWF's Nairobi headquarters, an array of professionals involved in conservation—law enforcers, prosecutors, magistrates, and others—agreed that Africa should strengthen its counter-trafficking efforts.

Shortly after, AWF worked with the Kenya Wildlife Service to procure, train, and deploy sniffer dogs, along with their skilled handlers, to Jomo Kenyatta International Airport and other trafficking hotspots. Since that early focus on enhancing contraband detection, AWF has grown its counter-trafficking program to include capacity-building in investigating and prosecuting offenders.

We launched **Canines for Conservation** in 2014, our **Wildlife Law Enforcement Program** in 2015, and our **Wildlife Cybercrime Investigation Program** in 2019. These initiatives fall under the Counter Wildlife Trafficking Program, which today has 14 staff members spread across eight countries: Kenya, the Democratic Republic of the Congo, Ethiopia, Tanzania, Botswana, Cameroon, Mozambique, and Uganda. The program, built under the leadership of our long-time vice president for species conservation and science, Philip Muruthi, is one arm of AWF's dynamic integrated effort to support governments in fighting the illegal wildlife trade in Africa. It is managed by director Didi Wamukoya, a one-time Kenya Wildlife Service prosecutor and current honorary KWS warden.



2



3

1: Counter-wildlife-trafficking training at a border post in Kenya ©AWF 2-3: AWF-trained detection dogs and handlers search cargo and luggage 3: ©AFP/Simon Maina

Canines for Conservation

Since the first class of detection dogs and canine handlers graduated from a rigorous three-month course at AWF's training facility in Tanzania, the Canines for Conservation program has grown—in size, effectiveness, and reputation. We've deployed canine teams to six countries—**Botswana, Mozambique, Tanzania, Kenya, Uganda, Cameroon**—helping authorities leverage limited resources to catch and deter traffickers. More recently, we expanded the program to **Ethiopia**, starting with constructing a canine facility at Bole International Airport and training dogs and handlers.

In many ways, dogs are an ideal law enforcement aide. "They can quickly and effectively search through cargo and luggage without causing delays in the movement of goods," said Muruthi. In practice searches, the dogs take as little as 12 seconds to search a car and 5-10 seconds to search a suitcase. Moreover, the team's accuracy is close to perfect. Another benefit of dogs: "They are hard-working and incorruptible. They don't lie to us," says Muruthi.

Furthermore, teams of skilled handlers and trained dogs are a scalable solution, explaining why canine units are increasingly seen as a solution to illegal wildlife trafficking. With AWF's technical and financial support, more African governments are using canine units to enhance investigation and prosecution.

Most importantly, canine units get results. Since 2014, AWF-trained teams have made 408 finds of ivory, rhino horn, pangolin scales, lion claws, and other illegal wildlife products. The impact of these busts transcends the thwarting of specific trafficking operations. The longer-term benefit is that **canine teams act as deterrents** merely by their presence. "The number of finds at some of the airports where we have deployed canine teams has really declined," says Sylvia Wasige, AWF senior project officer, species conservation. "The traffickers know that if you're passing through Jomo Kenyatta Airport, there is a hundred percent chance you will be searched. And if you have a wildlife product, you will be arrested."



1

Tracker dogs

A growing focus of the canine program is the training and deployment of tracker dog teams, which are field-based and follow trails from kill sites to poachers' doorsteps, often over many kilometers and several days. Once COVID-19 hit and shut down wildlife tourism everywhere, protected-area authorities faced a considerable challenge. Not only did parks' revenue streams dry up, but there was also a very real possibility poaching would increase in parks suddenly empty of tourists and tourism providers. As a result, AWF saw an uptick in wildlife authority requests for tracker units (handlers and dogs). Teams are now working at Tanzania's **Kilimanjaro International Airport** and in the wildlife-rich **Serengeti National Park**. We also support tracker teams in Tanzania's **Manyara/Tarangire ecosystem**, **Mkomazi National Park**, and Kenya's **Lake Nakuru National Park** and **Ol Pejeta Conservancy**.



2

Five freedoms

A special aspect of the Canines for Conservation program is its emphasis on creating a **culture of care** for the dogs. The AWF training program forges strong bonds between handlers and dogs through dedicated playtime and a focus in the curriculum on the dogs' needs and nature. The canines become wildlife authority employees after graduation, and our partners assure these talented dogs will enjoy freedom from hunger and thirst, discomfort, pain, injury, disease, fear, distress, and the freedom to express normal behavior, including play.

"We want to make sure that at no point is a dog ever in distress," says Wasige. This means dogs receive healthy diets, enjoy regular exercise, and are not separated from their handlers for long periods. In Tanzania, AWF is helping authorities build a facility to house handlers near the tracker dogs. Thus, the handler can respond promptly if a dog gets sick or there's an unexpected incident such as a snakebite.

1,2: AWF trains canines and their future handlers at our facility in Tanzania. 3: Field training for wildlife law enforcers 4: Cybercrime workshops help keep wildlife law enforcers current in their skill sets. All photos ©AWF



3

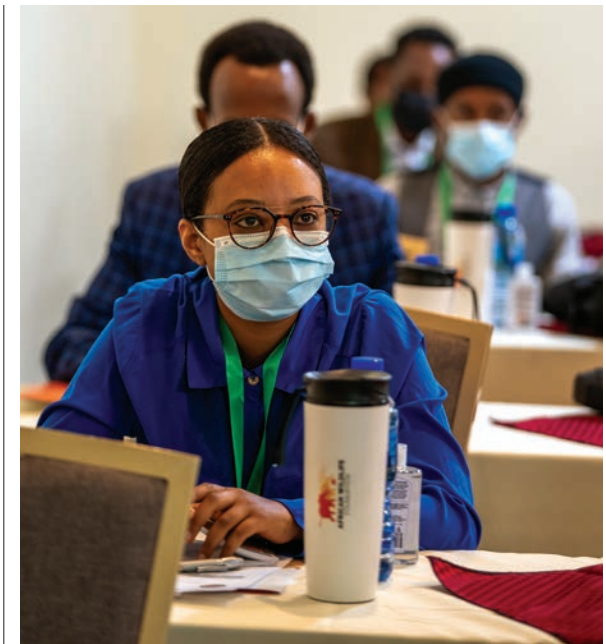
"We will be the losers"

Efforts to fight poaching, strengthen contraband detection, and catch traffickers are for naught if said country's justice system doesn't take wildlife crimes seriously. Many countries issue light penalties for wildlife crime, an approach that encourages repeat offenders and even the formation of criminal syndicates.

When AWF began its **Wildlife Judicial and Prosecutorial Assistance Program** (initially known as the Wildlife Law Enforcement Program) in 2015, it focused on analyzing wildlife laws in target countries to better understand the legal climate and be an informed advocate for more robust laws. We've since delivered analyses of wildlife laws to Botswana, Cameroon, the Democratic Republic of the Congo, Ethiopia, Kenya, Mozambique, South Africa, Swaziland, Tanzania, and Uganda.

Especially early on, many players marginalized wildlife crime. Says Didi Wamukoya, a former KWS prosecutor who now heads AWF's Counter Wildlife Trafficking Program: "When I started working as a prosecutor, we had a meeting with the judiciary, and one participant said to us: 'I mean, I have murder cases, robberies, violence before me, why should I focus on somebody who has just killed a dik-dik?'"

"We had to explain, 'You think this antelope is small, but it's part of a large ecosystem, of which human beings are part. So, you let them go free. From one antelope, they will move higher. They will destroy elephants. They will destroy an entire ecosystem. And we will be the losers.'"



4

Crime investigation training

To help change attitudes, we expanded the program's scope to include **sensitization and training of prosecutors and other wildlife law enforcers**. The workshops familiarize participants with the laws on the books. And they emphasize the costs of wildlife crime to ecosystems and the human communities dependent on those ecosystems for livelihoods and services such as water. They also cover how prosecutors can add teeth where laws are weak by making other applicable criminal charges—such as customs or tax law violations.

Because wildlife crime has special characteristics, we also hold workshops for first responders and other investigators. "When you're being trained in how to manage a crime scene as an investigator," says Wamukoya, "they don't tell you, for example, bushmeat can decompose immediately. Or the elephant carcasses in our park—if you leave them overnight, the hyenas will devour them, your evidence will be gone. How do you deal with such crime scenes that are unique to wildlife? That is the gap we try to fill. We build on their general training to highlight the specific aspects of wildlife law enforcement they need." To date, **we have trained 2,066 individuals**—judges, prosecutors, customs officers, anti-corruption officers, rangers, park managers, and others— from over 18 countries.



1

Court monitoring

Logistical challenges and insufficient witness testimony are two other factors that can derail prosecution. AWF has placed court monitors in the Tsavo-Mkomazi cross-border region (Kenya-Tanzania), the Democratic Republic of Congo, and Ethiopia to address this challenge. These monitors provide a range of support to prosecutors, especially in pre-trial processes. They not only help with matters like evidence storage and delivery—but they also help prepare rangers and other witnesses to be **effective witnesses on the stand**. There are few other projects like this one, and to our knowledge, it's the most extensive court monitoring program in Africa.

Some of the most critical assistance our court monitors provide is logistical. Say there is no budget to get crucial evidence, an ivory bangle bracelet, from Tsavo to Nairobi for forensic analysis. But the prosecutor requires certification that the specimen is ivory. AWF may step in to cover transportation costs, provide technical guidance regarding chain-of-evidence integrity, and follow up on the forensic expert's report. The aim is to keep cases moving along because delays of many months can lead to witness no-shows and other lapses. Benson Kasyoki, AWF legal officer, court monitoring, says working with witnesses is the best part of his job. "Most rangers," he says, "have the bushcraft knowledge, but most have never been in courts." He advises them about submitting evidence, testifying effectively, and presenting evidence during hearings and trials. (It's important to note that we never coach witnesses. Many cases are old,



2

even years old, so our court monitors have the witnesses review their documentation to refresh their memories.)

Wildlife rangers generally are under-resourced, underpaid, alone in the wild, and missing their families. Kasyoki found his already considerable respect for rangers has deepened. "You get to feel their pain and understand what they do," he says. "I am telling you, if you come and hear their stories, it will give you compassion. They go through a lot of challenges. **Empowering them** with this wonderful knowledge, it's a plus for me. They understand they have a brother, someone out there to maybe address some of their challenges."

1: On-the-job support for wildlife prosecutors
2: Props for a crime investigation workshop
3,4: Training in cellular forensics
All photos ©AWF

Wildlife cybercrime investigation

AWF's Wildlife Cybercrime Investigation Program represents the **newest front in our counter-trafficking efforts**. Managed by former Kenya police detective Ernest Agina, the program seeks to build the capacity of AWF's law enforcement partners to intercept illegal online trade and carry out cybercrime investigations. To date, we are supporting cybercrime capacity-building in Kenya, Uganda, and the Democratic Republic of the Congo.

Perhaps not surprisingly, the work is partnership-heavy, and AWF has established relationships with a dozen government and private-sector organizations. Some we support, such as the Uganda Wildlife Authority; others are service providers with tools that can benefit law enforcers. For example, we work with Cellebrite, a private-tech company, to advance partner agencies' capacities in mobile forensics. We also have a relationship with Interpol, Kenya, and Uganda, which can benefit the Kenya Wildlife Service and the Uganda Wildlife Authority when they have investigations that lead overseas.

We are tackling wildlife crime in the digital arena by partnering with security operations to identify and investigate the online sale of illegal wildlife products and provide forensic data for law enforcement officials to track down criminals. Says Wamukoya: "They do an online 'patrol' using keywords we provide. So, they are able to find people who are illegally selling wildlife products through online marketplaces or social media."

When it comes to illegal activity conducted on platforms like Facebook and eBay, "AWF plays more of a whistleblower role for the wildlife law enforcement agencies," says Agina, "because we do not have the mandate to investigate or effect arrests. If we see something bad happening online, we report to the relevant law enforcement agencies, after profiling."

Our trainings have evolved to emphasize the importance of collecting **mobile phone evidence**. "Poachers, traffickers, people in our villages all have mobile phones, and there's a lot of evidence that can be gathered from these mobile phones," says Wamukoya. "The first



3



4

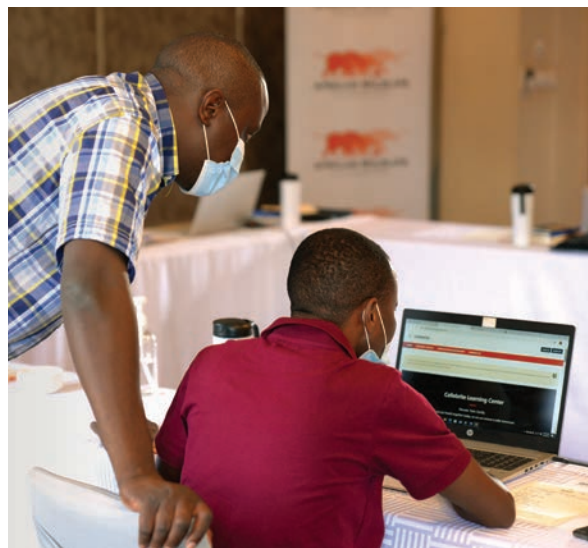
step is actually just to train the rangers and investigators on how to recover phones from a suspect... You know, once you find someone with ivory...go beyond the ivory and look for other forms of evidence that can also link to the kingpin." In 2021 AWF opened a new digital forensics lab at our headquarters. "The idea is to have the law enforcers access it and use it to extract information or conduct any other kind of forensic analysis on a digital device. The lab is at their disposal," Wamukoya said.



1

Undercover bust

In late 2020/early 2021, AWF supported KWS during a three-week investigation involving covert and overt teams as well as the service's AWF-trained canine unit, DNA forensic lab, cybercrime unit, and the prosecution team. The investigation led to the arrest of 39 suspects and recovered elephant tusks, a live pangolin, and other contraband. "Our role was pre-and post-," says Agina. "We helped them to draft the operation orders in terms of what they should look out for, and we participated in a debrief." All told, since establishing our cybercrime unit, AWF has supported investigations with the Kenya Wildlife Service and the Uganda Wildlife Authority, leading to 67 arrests.



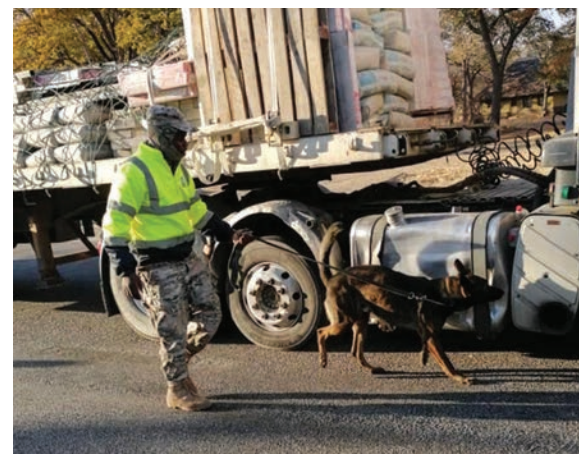
2



3



4



5



6

1-3: Advanced training in collecting, storing, and presenting digital and electronic evidence 4: AWF's Didi Wamukoya 5: Inspecting vehicles at a border checkpoint 6: Rangers often are underpaid and under-resourced. "If you hear their stories, it will give you compassion," says AWF's Benson Kasyoki. All photos ©AWF

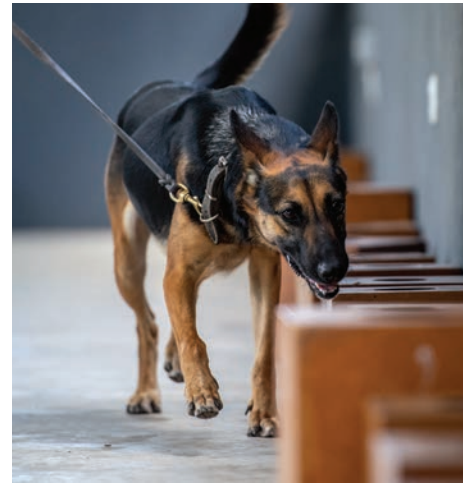
Cohesive team

Despite the magnitude of its mission, the Counter Wildlife Trafficking team remains focused and optimistic. One key to its effectiveness, says Wasige, is strategic deliberateness. Counter-trafficking priorities for the next 10 years, which derive from AWF's larger strategic vision, represent careful thinking. "Speaking for the dog program," says Wasige, "when we have a request to support an intelligence operation, we don't jump. We are intentional." If a proposal falls outside the scope of the program's strategic priorities, the team will turn it down, she says. Another team asset is cohesion. "We don't look around at each other," says Kasyoki, "and say, 'This is a lawyer, this is an ecologist.' It's a super team. Everybody is united about wanting to make an impact, and we are zealous about what we're doing."

"We have a team of professionals who are passionate about wildlife," says Wasige. "When the technical advisors to the canine units are talking about an operation they want to support, their passion shines through. They believe in the contribution that they are making."

"The canine handlers, the way they engage with their dogs on the job, their gait, their confidence, you can see their commitment. When they make a find, afterward, when you meet them, they are still so energetic and so happy and are willing to do that again—next week or the week after that." Clear-eyed vision plus victories along the way help everyone maintain balance and focus as part of a team known for meeting its targets. "Seeing us achieve milestones keeps us going," says Kasyoki.

Bigger wins in the conservation world, such as a decline in poaching in one of our target landscapes, are critical to morale, says Wamukoya. But smaller successes matter, too. "What keeps me optimistic," she says, "is knowing that you talked to people, and you actually changed their minds. You talked to a magistrate, and you hear three or four months later that they have given a much larger fine than before. Finding that they have listened to you is inspiring."



CANINES FOR CONSERVATION

AWF's Canines for Conservation program works with national wildlife authorities in six countries to develop and deploy dog-and-handler teams to strategic ports and border checkpoints along known trafficking routes for ivory and other illegal wildlife products. These detection- and tracker-dog units enhance the ability of law enforcers to apprehend wildlife traffickers, prevent poaching in high-risk landscapes, and ultimately deter poaching and smuggling.

Over the course of a four-week "boot camp," AWF's Canines for Conservation program trains dogs and their human handlers to become **powerful agents in the fight against the illegal wildlife trade**. The dogs are taught to recognize and signal specific scents—rhino horn and elephant ivory, lion bone, and giraffe parts—

using the strength of their noses, which are up to 100,000 times more powerful than a human nose. After graduating, the teams are deployed to wildlife authorities to serve as tracker- or detection-dog teams, as per their training.

Tracker dogs are based in parks and work at the scenes of wildlife crime. They act as first responders to incidents of poaching, picking up a scent and following it back to the perpetrator. Detection dogs work at strategic country entry and exit points, often an airport, sniffing cargo and luggage for contraband.

In FY21, there were 34 finds made by the Canines for Conservation teams. The number may seem small, but the significance is huge—once dogs are known to poachers and smugglers, the deterrent effect of the dogs is triggered.

Quick work by good dogs

In March 2021, AWF delivered four detection dogs to a new base in Murchison Falls, Uganda. AWF had supported the construction of the canine facility, which was designed to house six dogs and features accommodations for the human handlers.

Within a few hours of the dogs' delivery, the canine teams were at work, joining an intelligence-led operation. The new operatives' first mission was a resounding success, uncovering 24 kilograms of ivory as well as the suspect, whom authorities arrested. Within hours on the job, these dogs had delivered their first bust.

1: Handler and canine at Entebbe's Jomo Kenyatta Int'l Airport © Martin Jumba 2,3: Detection dogs love to work and learn. 4: AWF-built facility in Murchison Falls, Uganda, houses six canines, a play area, and an office, plus accommodations for handlers. 5: New detection dogs in the Murchison Falls landscape, Uganda 6: Kenya Wildlife Service ranger and canine inspect a truck bed. All photos ©AWF

COVID response

As the shutdown to Africa's tourism economy brought on by the pandemic raised fears of a surge in poaching and bushmeat hunting, the canine teams were more needed than ever. In **Botswana**, AWF launched mobile searches at prime entry and exit points in Maun and Kasane. Between July and September of 2020, teams searched more than 900 vehicles and over 2,800 items of luggage.

In **Lake Nakuru National Park** in Kenya, AWF assisted the Kenya Wildlife Service in building a canine facility. After the unit was up and running, AWF handed over needed equipment for the dog-and-handler teams and patrols, as well as office supplies and PPE.

Our investment continuously pays off. In FY21, **Tanzanian canine teams searched 2,089 flights and over 700 vehicles**. The teams also conducted 13 intelligence-led operations, leading to the recovery of 110 kilograms of raw ivory and the arrest of 28 suspects.

At **Mozambique's Maputo International Airport**, a sniffer dog team's work led to a bust of lion and rhino products. Authorities were able to recover teeth and claws taken from 10 lions and five horns taken from three rhinos.

The Canines program has expansion plans for **Ethiopia** and **Cameroon**. AWF signed an agreement with the Elephants Crisis Fund supporting the establishment of a canine unit and kennels at Bole International Airport in Ethiopia. The Cameroon unit is in the prep stages now and hopes to launch soon.

Many AWF landscape, community, and species programs and projects incorporate strategies designed to raise awareness of wildlife needs and inspire conservation action. But we also have dedicated education and outreach programs that further the reach of African conservation voices and help foster and energize individual and grassroots conservation leadership.

Mkapa Awards: “Bringing Africa to the world, and the world to Africa”

On October 28, 2021, AWF’s yearlong 60th-anniversary celebration began with a colorful awards ceremony honoring the inaugural **Benjamin Mkapa African Wildlife Photography Awards** winners. The contest is named in honor of the late Tanzanian President H. E. Benjamin Mkapa.

The event at the Nairobi National Museum was attended by photographers, AWF board and staff members, and distinguished guests, including the late Benjamin Mkapa’s wife, Madame Anna Mkapa, and Najib Balala, Kenya’s cabinet secretary for tourism and wildlife. Madam Mkapa and

© Jen Guyton / Mkapa Awards

Balala presented the grand prize of US \$5,000 and a large Shona elephant sculpture to Riccardo Marchegiani, of Italy, for his “Gelada and Baby,” which he shot in Simien Mountains National Park, Ethiopia. (Shona is a type of Zimbabwean carved sculpture.)

“As I walked through the exhibit,” said Madame Mkapa, “he (Benjamin Mkapa) was with me, and I could easily imagine his gasps and delight and awe and laughter as he and I marveled at each and every photograph that so beautifully captured what he and we, care about so deeply—the wildlife, wild lands, and the people at the center of it all.

“Africa’s conservation relies on every one of us to raise our voices, so I stand here today to encourage you: Speak up until you’re voiceless.”

Sixteen award-winning photographers from across the world also attended the ceremony and received honorary certificates for their photographs and videos. The global competition received almost 9,000 entries from 50 countries worldwide, including 10 African countries. AWF CEO Kaddu Sebunya said, “Going forward, we are committed to building the capacity of African photographers, especially the youth, ensuring that African perspectives are represented from both sides of the lens.”

The event marked the beginning of AWF’s 60th-anniversary commemoration and a year of activities that celebrate our past and set the stage for ambitious future endeavors.



1



2



3

1: Nairobi National Museum, site of the inaugural Mkapa African Wildlife Awards ©Sertified Image
 2: Riccardo Marchegiani, Benjamin Mkapa African Wildlife Photography Awards Grand Prize Winner, 2021
 3: Taking in the award winners prior to the ceremony All photos ©AWF



TRAINING AFRICAN FILMMAKERS TO TELL WILDLIFE CONSERVATION STORIES

A series of media workshops organized by AWF and Jackson Wild in FY21 provided video storytellers in Africa with the opportunity to learn from experienced wildlife filmmakers and conservationists.

The exciting new program is part of AWF’s efforts to highlight African conservation perspectives as well as mobilize and support a growing conservation movement in Africa. It is designed to help elevate critical voices on the continent and create powerful conservation stories.

The **African Conservation Voices Media Labs** draw on Jackson Wild’s deep connections within the nature and conservation filmmaking community and feature customized workshops led by AWF conservation experts. The first series engaged mid-career storytellers and filmmakers in Kenya, following a competitive application process. The 26 fellows selected participated in online seminars on conservation models and practices, wildlife research, the components of visual storytelling, interviewing techniques, ethical aspects of storytelling, and more.

A select group will take part in a field workshop hosted by our partners, Cottar’s Wildlife Conservation Trust and Cottar’s Camp in the Mara, to shoot three short films with hands-on coaching from experts in storytelling, filming,

and editing. Due to COVID, the field portion of the program has been delayed, but in the interim, some participants received small AWF production grants to begin work on local projects.

The program also is designed to raise awareness of the complex threats to wildlife and wild lands in modern Africa, with an important focus on the relationships between communities and conservation. “Ultimately,” AWF CEO Kaddu Sebunya said, “in addition to building a cadre of talented, recognized conservation storytellers, we aim to use these compelling video shorts to help build an African conservation movement, especially among African youth.”

While the pilot Media Lab in FY21 admitted only Kenyan citizens, AWF and Jackson Wild plan to **expand the program into Rwanda and Zimbabwe in 2022 and beyond**, while building platforms and pathways for broader dissemination of local stories by local people.

The African Conservation Voices Media Labs is made possible in part by the Avatar Alliance Foundation, Sony, Fujifilm, Adobe, Cottar’s Safaris, and the Embassy of the United States of America to Kenya.



1

CLASSROOM AFRICA: CREATING FUTURE CONSERVATION CHAMPIONS

Since rebuilding the first school in 2011, Classroom Africa has built **six bright, airy, high-quality schools** in areas of critical conservation concern. The most recent additions are Sarachom and Kidepo primary schools, located in a wildlife-rich part of northern Uganda lacking vital infrastructure, including schools.

The four other Classroom Africa schools are in Ethiopia's Simien Mountains, Zambia's Lupani District, the Manyara corridor in Tanzania, and the DRC's Equator Province. AWF not only upgraded the primary schools and campuses in these remote locations, but also offers conservation activities for students and training opportunities, as well as all-important housing for teachers.

Today, Classroom Africa is expanding from brick-and-mortar projects to more dispersed conservation education centered in AWF landscapes. Meanwhile, the six Classroom Africa

schools serve as **hubs for teacher training and community life**, with a focus on conservation. Throughout all our landscapes, AWF is linking schools with national wildlife clubs and other organizations to implement **conservation-education activities**. We also plan to support education in schools through the provision of books and other resources, including solar power, which will enhance learning environments.

By engaging students and communities in conservation and exposing them to wildlife and wild lands, Classroom Africa seeks to create support for conservation goals and activities, foster future conservation leadership, and reduce engagement with the illegal wildlife trade or other unsustainable activities.



2



3

1: Students at Ngongodinyi Primary in the Tsavo-Mkomazi landscape 2: First-ever field trip to Kidepo Valley National Park for students from Sarachom Primary School in Uganda 3: An AWF-provided hand-washing station at the Mbulia Primary School in Tsavo-Mkomazi 4: One of 67 student scouts who took part in a "cleaning walk" at Udzungwa Mountains National Park All photos ©AWF



4

Spreading the word

In 2021, AWF was featured on United Nations Educational, Scientific, and Cultural Organisation (UNESCO) online platform **Green Citizens**, which highlights replicable citizen projects that benefit communities, encourages visitors to support the highlighted projects, and seeks to inspire like action.

Classroom Africa: By the Numbers

Classroom Africa schools have helped improve the lives of over 2,000 students annually, supported the professional development of scores of teachers, and helped conserve more than 223,000 acres of forest and other wild lands through land-use covenants with communities.

Letter from the Chair: GREAT PROGRESS, FOR WHICH WE ARE GRATEFUL



Dear Friends of AWF,

A year ago, I thought for sure we would be back to normal, but, alas, this is not the case. The good news is that despite the pandemic, we have made great progress in the world of conservation. This is thanks to a wonderful and devoted staff, a strong and visionary CEO, committed and passionate boards, diverse and talented partners, and generous and steadfast donors. We are fortunate.

One of the things I wanted to focus on when becoming chair was convening. It struck me that AWF is in a perfect position to be the key convener for all things conservation on the continent...and this is increasingly the case. We are organizing and helping run the Africa Protected Areas Congress in July of 2022, which will inform and affect pan-African conservation. (Should any of you want to attend, please

reach out to us, and we will give you the information.) Many more symposia and workshops are taking place at our beautiful conservation centre at headquarters in Nairobi, and policymakers and other key decision makers are reaching out to us for opinions and advice.

Our most glamorous “convening” was the exhibition in the Nairobi National Museum, where the first annual Mkapa Awards were given, and guests could view the spectacular photos taken by amateurs and professionals alike. If you would like to see them online, please go to awf.org/mkapa2.

It was a wonderful way to honor President Benjamin Mkapa, who died in 2020 and left a big hole on our board and a big gap in the world of conservation. He was a remarkable man, a close friend, and we all miss him. However, we are so very fortunate and deeply grateful to Madame Anna Mkapa for her continued dedication and service to conservation and to AWF.

Of course, we could not do any of these critical projects without the support of friends like you. I promise you that we are good stewards of your gifts, and each one makes a difference. Your philanthropy makes the animals safer, makes the landscapes open for migration, helps enhance livelihoods in the communities, and so much more. Your gifts make change occur, for which we are very grateful.

We all miss traveling to Africa and are so hoping that in 2022 things will continue to open...maybe not back to “normal,” but certainly a bit safer.

With gratitude for all that you do,

Heather Sturt Haaga
AWF Board Chair

Board of Trustees

Heather Sturt Haaga <i>Chair</i>	H.E. Hailemariam Dessalegn Boshe <i>(Past prime minister of Ethiopia)</i>	Gilles Harerimana	Emery Rubagenga
Larry Green <i>Vice Chair</i>	Mark Burstein	Christine F. Hemrick	Anne Scott
Marleen Groen <i>Treasurer</i>	Payson Coleman	H.E. Mahamadou Issoufou <i>(Past president of Niger)</i>	Fred Steiner
Myma Belo-Osagie <i>Secretary</i>	Lynn Dolnick	Stephen G. Juelsgaard	Pierre Trapanese
Sara Aviel	D. Gregory B. Edwards	Andrew Wambari Kairu	Warren Walker
	Stephen Golden	Christopher Lee	Charles R. Wall
	Donald Gray	Andrew Malk	Lindsay Feldman Weissert
		H.E. Festus G. Mogae <i>(Past president of Botswana)</i>	Maria Wilhelma

Trustees Emeriti

David E. Thomson <i>Chair</i>	William E. James
E.U. Curtis Bohlen	Dennis J. Keller
Joan Donner	Robert King
Leila S. Green	Victoria Leslie
John H. Heminway	Henry P. McIntosh IV
	Charles R. Wall

Leadership Council

Mari Sinton-Martinez & Paul Martinez <i>Co-chairs</i>	Maxine C. Janes
Sue Anschutz-Rodgers	Misha Jannard
Lavinia Boyd	Valerie Mills
Jennifer S. Brinkley	Jennifer Ritman & Andrew Brinkworth
Bobbie Ceiley & Glen Ceiley	Robyn Shreiber
Andrew Dixon	Mary E. Schroeder
Blythe Haaga Parker & Tyler Parker	Glenna Waterman
Jane R. Horvitz	Chris Welles & Catherine Welles
	Toby Woskko

International Boards

KENYA

Andrew Wambari Kairu <i>Chair</i>	Judy Gona
Kaddu Sebunya <i>Secretary</i>	Heather Sturt Haaga
Mohanjeet Singh Brar	Jacqueline Hinga
D. Gregory B. Edwards	Ali Kaka
	Patricia Kameri-Mbote
	Mutuma Marangu

UNITED KINGDOM

D. Gregory B. Edwards <i>Chair</i>
Marleen Groen
Heather Sturt Haaga
Kaddu Sebunya
Warren Walker

CANADA

Donald Gray <i>Chair</i>
Catherine Herring <i>Vice Chair</i>
Heather Sturt Haaga <i>Treasurer</i>
Mark Ponter <i>Secretary</i>
Colin Chapman
Kaddu Sebunya

AWF's trustees, council members, and our many other supporters help to safeguard Africa's wildlife and wild lands, eliminate illegal wildlife trade, and promote African-led conservation in the service of communities and wildlife. Thank you for all you do.

The trustees and council lists reflect those who served during the 2021 fiscal year as well as those serving at the time of publication in early FY22

OUR PARTNERS

We extend our deep appreciation for the dedicated partnership of the following governments:
 Botswana, Cameroon, the Democratic Republic of the Congo, Ethiopia, Kenya, Mozambique, Niger,
 Nigeria, Rwanda, Senegal, South Africa, Tanzania, Uganda, Zambia, and Zimbabwe.

Public Sector & International Partners

Austrian Embassy	European Commission	Royal Netherlands Embassy, Kenya	United States Fish & Wildlife Service
Bureau of International Narcotics & Law Enforcement Affairs, United States Department of State	German Federal Agency for Nature Conservation	Royal Netherlands Embassy, South Sudan	United States Forest Service
Critical Ecosystem Partnership Fund	Great Apes Survival Partnership	United Nations Development Programme	University of East Anglia
Deutsche Gesellschaft für Internationale Zusammenarbeit	KfW Group	United Nations Educational, Scientific & Cultural Organization	World Bank Group
Embassy of Poland	Millennium Challenge Corporation	United States Agency for International Development	
	Ministry of Foreign Affairs, Netherlands		
	Norwegian Embassy, Tanzania		

Strategic & Implementing Partners

Africa Network for Animal Welfare	Conservation Through Public Health	Namibian Association of Community Based Natural Resource Management Support Organisations	Club of Rome
Africa Protected Areas Congress	CORDIO East Africa	Nature's Best Photography	Friends of Nature
African Conservation Centre	Cottar's Wildlife Conservation Trust	The Nature Conservancy	Global Youth Biodiversity Network
African CSOs Biodiversity Alliance	Cottar's 1920s Safari Camp	Shanghai Zoo	Réseau des Jeunes des Forêts d'Afrique Centrale
African Development Bank	The East African Wildlife Society	Uganda Wildlife Authority	World Scouts Movement
African Group of Negotiators	ECOTRUST, Uganda	Uganda Wildlife Education Center	COUNTER WILDLIFE TRAFFICKING PROGRAM
African Ministerial Conference on the Environment	The Expatriate Center	United Nations Environment Programme	United Nations Office on Drugs and Crime
African Protected Area Directors	International Gorilla Conservation Programme	WildOceans	Space for Giants
African Union	International Union for Conservation of Nature	YOUTH PROGRAM	Irdeto
Beijing Zoo	Jackson Wild	Africa Alliance of YMCAs	Peace Parks Foundation
BirdLife	Kenya Wildlife Conservancies Association	Africa Youth for Nature Network	Juristes pour l'Environnement au Congo (JUREC)
Civil Society Alliance for Biodiversity Conservation	Ministry of Ecology & Environment, China	African Leadership University	American College of Environmental Lawyers
Conservation International		Association Jeunesse Verte du Cameroun	

Chair's Circle

\$100,000 & above

Anonymous (4)	Larry & Stephanie Flinn	Bob & Emmy King	Mari Sinton-Martinez & Paul Martinez
Acton Family Giving	The Giorgi Family Foundation	Mr. Daniel Maltz	Gwendolyn Sontheim
Arcus Foundation	The Gordon & Patricia Gray Animal Welfare Foundation	Nancy-Carroll Draper Foundation	David & Karie Thomson
Brunckhorst Foundation	Heather & Paul Haaga	Oak Foundation	Nancy & Charles Wall Family Foundation Fund
Payson & Kim Coleman	Head & Heart Foundation	Panaphil Foundation	Ms. Maria Wilhelm
D.N. Batten Foundation	Ms. Christine F. Hemrick	The M. Piuze Foundation	
FEDEC	Dennis & Connie Keller	Scott Family Foundation II	

CEO's Circle

\$50,000 to \$99,999

Anonymous	Mrs. Maggie Georgiadis	The Morgan Family Foundation	Leila Maw Straus
Benevity Social Ventures, Inc.	Stephen Golden & Susan Tarrence	Network For Good	Wiancko Family Donor Advised Fund of the Community Foundation of Jackson Hole
Candice Bergen	Mr. & Mrs. Larry Green	Elizabeth F. Reid	Wildflower Foundation
Lynn & Ed Dolnick	Jonathan Holtzman	Ronus Foundation	
Eagle's Wing Foundation	Dr. Stephen G. Juelsgaard	The Spurlino Foundation	
Earth Share		Mr. & Mrs. Peter Stewart	
Elephant Crisis Fund			

President's Circle

\$25,000 to \$49,999

Anonymous (2)	Mr. D. Gregory B. Edwards	Clare Marie & Christopher Lee	Sandra Pitts Seidenfeld
Ms. Brenda K. Ashworth & Mr. Donald Welch	The Joseph & Marie Field Family Environmental Foundation	Robert Lindstrom	Pierre Trapanese
Mr. Marty DiMarzio & Ms. Sara Aviel	Michael & Anne B. Golden	Marion Jameson	Denis Waitley
Mr. Francis J. Beatty Jr.	Ms. Marleen Groen	Mr. Andrew Malk	Mr. Warren Walker
Bright Funds	C. Barrows Hall	Ms. Barbara J. Malk	Lindsay Feldman Weissert
Burns & Kindle Families	Gilles Harerimana & Sara Nso	Manitou Fund	
Mr. Michael Comcowich	Kimberly M. Hughes	Kathy McKinnon	
The Dixit Family Gift Fund, a Donor Advised Fund of Renaissance Charitable Foundation	William & Janet James	John & Nuri Pierce	
	Erika Pearsall & Ned Jannotta Jr.	Laurie Robinson & Sheldon Krantz	

Heartland Partners

\$10,000 to \$24,999

Anonymous (10)	Mrs. Margaret A. Bader	Mrs. Myma Belo-Osagie	Lavinia (Vinnie) Boyd
Pamela Aarons	Emma Barnsley Foundation	Mr. & Mrs. Zohar Ben-Dov	Mrs. Randolph Brown
Sue Anschutz-Rodgers	Louise Beale	Jay & Savita Bharadwa	Mrs. Waltraud Buckland
Arvid Nordquist HAB	Andrew & Audrey Belomyzy Charitable Trust	Bloomberg Philanthropies	The Burnap Foundation
Kym Aughtry		Mrs. Patricia Blumberg	CanadaHelps.org

Ann Cannarella	Ms. Deborah J. Goodykoontz	Kathleen L. McCarthy	The Schaffner Family Foundation
Daniel & Margaret Carper Foundation	Ms. Reyla Graber	Scott T. McGraw	Ms. Katherine W. Schoonover
Mr. Rich Chambers & Ms. Bonnie McGregor	Blythe Haaga Parker & Tyler Parker	Jeffrey & Jacqueline Miller	Mrs. Mary E. Schroeder
Mr. & Mrs. David Chase	Mr. & Mrs. Edward Harris	Anne B. Mize Ph.D.	SEB Charitable Fund
Dr. & Mrs. Donald Clark	Heather Byrne & Ron Helmecci	Gordon & Betty Moore	Susan H. Shane
Cleveland Metroparks Zoo	The Helvellyn Foundation	Sandra J. Moss	Mr. & Mrs. Raymond Shea
The Columbus Foundation	Doug & Shoshana Himmel	The Mountain	Ms. Karen Steingraber
Mrs. Maricaye Daniels	The Tim & Karen Hixon Foundation	Spencer L. Murfey Jr. Family Foundation Inc	Lucy Y. Steinitz
Mrs. Stuart Davidson	Horne Family Foundation	Nature's Path Foods	Robert Stephen
Leslie Devereaux	Mrs. Rebecca Horowitz	Loi & Adele Nguyen	Michael & Alyson Strianese
Robert & Carol Dorsey	Mr. & Mrs. Michael Horvitz	Mark J. Ohrstrom	Susan Stribling
The Walter & Ursula Eberspacher Foundation	Dr. Tony Hunter & Jennifer Price	One 54 Holdings Ltd	Mr. & Mrs. John M. Sullivan Jr.
John & Nancy Edwards Family Foundation	Ina Kay Foundation	Mr. George D. O'Neill Jr.	Janet & John Swanson
Elephant Cooperation	The Jackson Family	The Overall Family Foundation	David & Ali Tejtjel
Fearn Donor Advised Fund	James	Mrs. Anne L. Pattee	Geoff Tennican & Jennifer Durning
J. Fletcher	JBCM Foundation	PayPal Giving Fund	Gwendolynn Thomas
Ms. Jane Flynn	In memory of Mary B Kanas from Jon & Kim Kanas	Charlie Perry	The Laney & Pasha Thornton Foundation
Candace & Bert Forbes	Mr. Michael R. Kidder	Marie Poos	Joyce M. Turk
Jean & Carolyn Fraley	The Laursen Family	Judy Rasmuson	UK Government Gift Aid
Mitchel Fromm	William & Michelle Ciccarelli Lerach	Mr. & Mrs. Peter Rice	Ms. Rita Vallet
Jack & Carole Garand	Nancy Heitel & Brian Malk	Henry M. Rines	Glenna Waterman
Donna Gerstenfeld	The Mars Foundation	Jennifer Ritman & Andrew Brinkworth	Mr. & Mrs. Craig Williams
John & Lesley Gilbert		Mr. & Mrs. David Roby	Anita Yagjian

Big 5 Society

\$5,000 to \$9,999

Anonymous (6)	Mr. Alvin W. Doehring	Anne & Ken Golden	Mario & Christine Marchi
AmazonSmile	Ms. Chizuko Dutta	Ms. Leila S. Green	Dr. Gerald Marinoff
Barbara Babcock	Eduardo Catalano Foundation	Susan M. Harding	Jacqueline B. Mars
Lawrence C. Baker, Jr.	Barton L. Faber & Elizabeth Byrnes	Mr. John & Mrs. Melanie Harkness	Susan & Frank Mars
Jared Bartok	Ms. Sherry L. Ferguson & Mr. Robert B. Zoellick	Mallory Hathaway	D. Anne Martin
Anthony Berlin	Figueirinhas Family	Howard E. Jessen	T. Mathewson
Big A LLC	Fitzhenry Family Foundation	Johnson & Johnson Family of Companies	Lynn McDonald
Blue Pacific Flavors	Jeffrey & Robin Fleck	Ann Peckham Keenan	Stevenson McIlvaine & Penelope Breese
Samuel Schneider Foundation	Lisa Fox	Hugh & Wendy Kendrick	Katharine K. McLane & Henry R. McLane Charitable Trust
Mr. Adrian Catalano	Ms. Leslie Franklin	Ms. Ellen Knell	Mary J. Meelia
Dan & Robin Catlin	Nancy Friday Foundation	Julie z	Ms. Elizabeth Mills
Julie A. Clayman	Rick Genter & Martina Keinath	The Kors Le Pere Foundation	Dr. John E. Moody
Ms. Bonnie Clendenning	The Edward & Verna Gerbic Family Foundation	Ms. Ann Landes	Fan & Peter Morris
Rick & Jane Coradi	Adah Ginn	Don & Pamela Lichty	Jeff & Shay Morris
The Cosman Family Foundation	Givergy	Ms. Janet Lynch	Erica Naito-Campbell
Stephen Crozier		Ms. Barbara L. Magin	Peter & Eleanor Nalle
Ms. Elizabeth P. Dewey		Mr. & Mrs. Robert Mantella	

Natural Habitat Adventures	Lewis E. Quinn Jr.	Andy & Laurie Skipper	The Glicksman Family Charitable Fund
Ms. Ellen Nusblatt	Ms. Anna K. Rentz	Ms. Elizabeth Steele & Mr. Scott Hammond	Brian Thomas
Mr. James Nystrom	Mrs. Susanne Richey	Ms. Judie Stein	TisBest Charity Gift Cards
Goodman Family Giving Fund	Melinda Richmond	Mr. Chris Stewart	Mr. Christopher D. Tower & Mr. Robert E. Celio
Noah & Annette Osnos	Ida Katherine Rigby, Ph.D.	Ms. Barbara Stiefel	Ms. Marcia Wade & Mr. John Officer
Dr. & Mrs. Nathaniel Peters	Arkie Ring	Jack & Shelby Stifle	Ms. Martha Wales
Dr. Patti McGill Peterson & Dr. Kate S. Woodward	W. W. Sadowinski	Alice Sturm	Ms. Anne H. Widmark
Ms. Ann A. Philips	Nimish & Niti Sanghrajka	Julia Szalwinski	Mireille Wilkinson
Duane Siders & Deborah Phillips	Mr. Matthew Schaab	Mary Takaichi	Mr. & Mrs. Gordon Wilson
Mr. John Priest	Ms. Christina Schreiner	Pamela Tate	Mr. Gordon S. Wilson
Mr. & Mrs. Gerald M Quiat	Mr. Morris Shafter	Elaine Berol Taylor & Scott Brevent Taylor Foundation	
	Ms. Nancy B. Sherertz		
	Mrs. Ellin A. Simmons		

Baobab Society

\$1,000 to \$4,999

Anonymous (28)	Mr. & Ms. John Anderson	Mrs. Kathryn Arnold	Bank of America Foundation
Anonymous, Frankfurt am Main, Germany	Dr. Julie Anderson Ph.D.	Lynn Arthur	Rodney Bartgis
Morra Aarons	Mr. Steve Anderson	James & Helen Ashford	Pat S. Bartlow
Mr. Benjamin A. Abel	Tricia Anderson	Aspen Business Center Foundation	Mr. Richard Bartoccini
Accenture	Ms. Edith Andrew-Akita	Martha Athanas	Ms. Carlin A. Barton
Jaime Acosta	Linda R. Andrews	Gerald Audesirk	Mr. & Mrs. Nasser Basir
Edwin & Jean Aiken	Stephen Andrick	Charles Bagley IV	Ruthe R. Battestin
Patrick Albanese	Ms. Dorianne Andros	Ms. Gabriella Bain	Jeffry W. Baum
Mr. Donald Allen	Ms. Faye Angevine	Mrs. Elise Balcom	Michael Farner & Brigitte Baumann
Ms. Susan M. Allison	Ms. Kristin Anundsen	Andrea Baldeck	Wendy Bausman
America's Charities	Phyllis Anzalone	Dr. Barbara Ballinger M.D.	Mr. Ted Bayer
Roger & Janice Anderman	Karen Appelman	Nancy Balto	Jonathan Beilin
Mrs. Barbara Anderson	Ms. Janet E. Armstrong	Mr. Richard Bamberger	Josef Beles
Ms. Faye C. Anderson	Cecil Arnold	Armine Banfield	Ms. Jan R. Bell

“The Helvellyn Foundation is a relatively new foundation, and we place high importance on partners that are strongly aligned with our values. The African Wildlife Foundation fits this requirement perfectly. Their unique approach encapsulates conservation and development, both equally important in ensuring a long-term future for Africa’s wildlife and wild lands. AWF is an organisation that we are proud to work with and can trust wholeheartedly to put Africa’s needs at the forefront of every project”

BECKY HOLMES
TRUSTEE,
THE HELVELLYN FOUNDATION

Mr. Philip G.
& Mrs. Jane C. Bellomy
Elizabeth Benjamin
Mrs. Robin I. Bennett
Bruce Berg
Mrs. Lynn Berger
Michael Berger
Patrick J. Bergin, Ph.D.
Mrs. Susan Bergman
Dr. Rafael E. Nunez
& Ms. Elizabeth S. Beringer
Mr. Robin Berkeley, OBE
Dr. & Mrs.
Jordan D. Berlin M.D.
Barbara A. Berman
Ms. Barbara Bernstein
Elizabeth Berrien
Max L. Bessler
Better Planet Fund
Donna Bhatia
Dhiraj & Agni Bhatt
Mrs. Lucius H. Biglow Jr.
David & Annie Bingham
Lori Bisnar
Matthew & Barbara Black
Ms. Ethalinda Blackman
Helen Blanchard
Tad & Kathy Blank
Ross Bleakney
Don & Marcia Blenko
Margaret S. & Philip D.
Block, Jr. Family Fund
Mr. Ronald T. Bloomstran
Dr. & Mr. Nancy Blum
Lyn Blumenthal
Lewis C. Blynn
Ms. Judith A. Boccock
Mr. & Mrs. David Boechler
Mr. William C. Boehm
& Ms. Deborah Paulet
Boeing
Alison Bolas
Gabrielle Bolton
John & Sandra Bordi
Lourdes Borges
Ms. Rema Boscov
Ms. Patricia Bosworth
Crandall Bowles
Mr. McLean Bowman
Robert Boyar

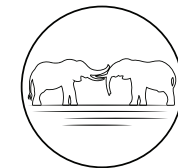
Tracy Boyer
BP Foundation
Ms. Elaine Branagh
J. Read Jr. & Janet Dennis
Branch Fund of the
Community Foundation
Serving Richmond
& Central Virginia
Ms. Susan E. Brandt
Ms. Joan Bristol
Susan Brittin
David & Connie Brockway
Mr. & Mrs. Julian A. Brodsky
Mr. & Mrs. Mark Brodsky
Jamie & Bryonie
Brooks from BBHLife
Brian Brost
Mr. Dan J. Brown
Ms. Rebecca Brown
Douglas Bue
Mr. & Mrs.
C. Frederick Buechner
Mrs. Linda L. Bukowski
Ms. Elizabeth Burdick
Christie Burk
Sharon Lee Butcher
Jon Butera
Mr. & Mrs. Ron Butler
Sharon Cabeen
CAF America
In Memory of Barbara Jo Call
Patricia Calvo
Mrs. Melinda S. Cameron
& Mr. Ralph Dingle
Ms. Judith F.
Campbell-McKennis
Dr. Irene Cannon-Geary
Laura Carbone
& Mitchell Watsky
Doris Carey
Alison Carlson
Ms. Peggy Carnahan
Ms. Leslie Carothers
Ms. Dorinda Carr
Ms. Gloria J. Carr
Melanie Carr
Ms. Kathleen J. Carrai
Ms. Elaine Carrick
Barbara A. Carroll
Ms. Valerie Casey
Tom & Gayle Casselman

The Cassum Family
Foundation
Richard Cayne
Mei Cham
Ms. Frankie Chamberlain
Mr. Dennis C. Chang
Ms. Sonya L. Chang
& Mr. Erik Neuenschwander
Charities Aid Foundation
The Charles Spear
Charitable Trust
Mr. Michael Charles
Rose Chase
Ms. Lynn Chiapella
Chimp: Charitable Impact
Foundation (Canada)
Ms. Joanne Cirocco
Mr. & Mrs. Peter Claeys
Jean Clark
Mr. Dion F. Coakley
Michael Cobler
Victoria Coburn
Ms. Cindy A. Cochran
Ms. Donna Cocke
Sharon P. Cole
Timothy Cole
Constance R. Coleman
Ms. Faith Coleman
Ms. Annette E. Colfax
Community Foundation
of New Jersey
Jay A. Conger
D. Conley
Jean E. Conley
Shawn & Joanne Connors
ConocoPhillips
Matching Gifts
Elizabeth Conran
Carla R. Corwin
Healy Cosay
Thomasine & Bruce Cosci
Mrs. Christine R. Cottrell
Mrs. Sally R. Coughlin
Mr. George Covington
Gordon & Jacqui Cragg
Peter & Sharon Crary
Credit Suisse Matching
Gifts Program
Susan Crocker
Donald Cronin

Ms. Marian L. Cross
Dr. Frederick A.
Cruickshank M.D.
Ms. Linda A. Crutchfield
Mr. Mark S. Cunningham
& Dr. Judith Klein
Melissa Curtin
D.A. Davidson & Co.
John Dahm
Mr. & Mrs. Larry Dale
Dianne C. Dana
Richard Dana
Mr. Gary Dargush
Elizabeth Jones Darley
Susan & Bill Darnell
Dr. Joan Davanzo
Mr. Jefferson Davis
Ms. Robin Davis
Mrs. & Mr. June Dawson
Dania de la Vega
John & Catherine de Strakosch
Mr. Pierre de Villiers
Laurie E. Dearlove
Dr. Jill Debona
Dr. & Mrs.
George J. Dechet M.D.
Mr. Douglas DeHart
Sarah Delaney
Thomas Deleuil
Dell Giving
Susan Delmanowski
Terry Demaria
Mr. & Mrs. Clayton H. Depew
Kim der Sanden
Ms. Patricia Derago
Mr. Hal Schneider
& Ms. Irene Devine
Dr. Larry J. Diamond Ph.D.
Dr. & Mrs.
Donald E. Dickerson
Mr. Mark A. &
Mrs. Katharine B. Dickson
Dan & Lisa DiFilippo
Irene Dimaggio
Ms. Colleen Dinter
Mr. Ryan Dishaw
Disney Worldwide
Services, Inc.
Barbara Diver
& Theodore Reff
Billy & Cindy Dodson

Thanks to our funding partners

AWF values our many partnerships with organizations in the private, NGO, and public sectors. Collaborations are integral to AWF's successes over nearly 60 years and our continued efforts to meet the immense challenge of securing a vital future for wildlife and wild lands in modern Africa.



Elephant
Crisis
Fund



Nancy Carroll-Draper
Foundation



MILLENNIUM
CHALLENGE CORPORATION
UNITED STATES OF AMERICA



Our sincere appreciation to these and the many other partners listed herein.

Mr. & Ms. Michael F. Doherty	David Evans	Mrs. Harriette M. Frank	Ms. Josephine Gittler	The Grey Family	Mr. & Mrs. Gaylord G. Henry	Matthew Jackson	Ms. Patricia A. Kaupp
Dave & Lynn Dolinar	Ms. Heather A. Evans	Dr. James Lawrence Frank M.D.	Jane Gizzi	Carl Griffin & Dr. Christine Johnson	Jack Hergenrader	Ms. Lauren Jacoby	Steven Kazan & Judy Heymann Kazan
Ellen & Don Dollar	Mrs. Carolyn C. Evarts	Lorraine Frankenberg	Ms. Susan M. Glasbrenner	John Griffith	Ms. Rita Herman	Mr. Alan Jaeger	Mr. Edward A. & Mrs. Terry J. Keible
Dominion Energy Charitable Foundation	Gillian Eyers	Franklin Philanthropic Foundation	The Glickenhau Foundation	Marjorie & Timothy Griffith	Ms. Joan Hero	Mark S. Jardini	Michael Kelleher
Ms. Tamela Donnelly	George Ezenna	Richard M. Friedberg	Lori Goeckler	Mr. Steven L. Griffith	Mary Anne Hertel	Linda Jasper	Elyssa Kellerman
The William H. Donner Foundation, Inc.	Mrs. Pamela Fair & Mr. Glen J. Sullivan	Karen Friedel	Diane Goldfarb	Natalie A. Grigg	William Hickey	Mr. & Mrs. Jay	Alan & Ursula Kellman
Mr. John A. Donovan	Mr. Robert Fanini	The Friendship Fund	Mr. Jim Goldschmidt	Elliot Grodco	Susan Hillenbrand	Barbara L. Jennings	Rodd & Amy Kelsey
Mr. & Mrs. Gerry Doubleday	Liz Fanning	Frontstream	Ms. Suzanne V. Golt	Ms. L. Gayle Gross & Mr. Howard Gross	Ruth Hiller	Mr. Jeffrey Jens	Ms. Kathleen Kemper & Mr. Gary B. Smith
Ms. Charlene J. Dougherty & Mr. Bruce C. Driver	Fantasy Junction	Dr. Andrew Frost & Mrs. Diana Frost	Ms. Lucille Gonyea	Mr. & Mrs. Peter A. Grove	Jack Hinnen	Josh Jensen	Ms. Kathleen Kemper & Mr. Gary B. Smith
Deb Dowling	Mr. Christophe Farber	Ms. Lisa Fulton	Manny Gonzalez	Mrs. Helen K. Groves	Dr. Myron Hinrichs	Mr. & Mrs. Thomas I. Jensen	Colleen Kennedy
Ms. Kathleen Doyle	Dr. William Farber DVM	Elaine Fung	Jesse Goodman	Ms. Adele S. Grunberg	Mr. & Mrs. Robert W. & Shauna W. Hirsch	Suzanne Jevne	Ms. Barbara J. Kerr
Ellen Dryer	Ms. Mary Farley	Amory & Linda Gage	Nicola Goodwin	In Memory of Robert Tim Guard	Shannon Hizey	Ms. Patricia K. Joanides	Dusty Kiernan
Ms. Helen M. Dunlap	Dr. Colleen Farmer	Mr. Dennis Gaitsgory	Ms. Candee Gordon	Timothy S. Gudukas	Deb Hoag	Michael & Denise John	Ms. Leila Kight
Mr. Christopher Dunn	Joann Fechner	Ms. Deborah Gale	Mr. James Gordon	Isaiah Guilford	Ms. Carol Hoffecker	The Ted & Ruth Johnson Family Foundation	Ms. D'Arcy Kirkland
Ms. Janice Dunn	Ms. Elaine Felde	Rick & Joyce Gallagher	Mr. & Mrs. William E. Gordon	Ms. GERALYN Gulseth	Mr. A. M. Hoffman	Hope Johnson	J. Kirkland
Ms. Jeanne DuPrau	James T. Field	Ms. Sandra Gallagher	Dr. David Gori	Mr. Michael Guttag	Drs. Bill & Nicole Hoffmeyer	Jeff & Scherry Johnson	Jeffrey S. Kiser
Ms. Andrea Durkin	Mitchell Field	David Gardner	Ms. April Gornik	Philip Guymont	Mr. & Mrs. John M. Holladay	Justine Johnson & Gary Block	Ms. Wendy Kitzmann
Ms. Christina E. Duthie	Scot & Mariana S. Fischer	Mr. Jon & Ms. Phyllis Gardner	The Barbara & Harold Gottesman Family Foundation	Ms. Candace I. Haber	Graham Holloway Family	Mr. Samuel Johnson	Mr. & Mrs. Matthew J. Klaben
Ms. Lori Eanes	Fischhoff Family	Terri & Larry Garnick	Sandy Gottstein	Mr. & Mrs. Paul H. Haberman	Becky Holmes	Thad Johnson	Julie Klaus
Ms. Ruth L. Eckert	Ms. Colleen Fitzpatrick	Dr. & Mrs. David K. Gaskill	Ms. Beverly E. Gough & Mr. Edward H. Griffith	Mr. & Mrs. Robert Hagge Jr.	Ms. Valerie F. Holmes	Carol Johnston	Candace Klein-Loetterle
Jo Ann Eder	Jack Fitzpatrick	Mr. Richard S. Gasparotti	Frederick J. Graboske	Mr. Crispin Hales	Mr. Michael Holton	Ms. Allie Jones	Ms. Deborah M. Kleinwachter
Mr. George O. & Ms. Kathleen D. Edwards	Mrs. Mitra Fiuzat	Katie Gastley	Vanessa Graef	Mr. Gustavus W. Hall	Mrs. Theodora W. Hooton	Andrew Jones	Kathleen Knepper
Anne Ehrlich	Lucy Flanagan	GE Foundation	Linda D. Graham	John Raymond Hall	Andrea Hopke	Colonel Freeman E. & Mrs. Anne B. Jones	David & Cassandra Knowles
Mr. Daniel Einzig	Dr. David Flatt & Mrs. Nancy C. Flatt	Mr. Markus H. Gemuend & Mrs. Christine E. Gemuend	Mrs. Victoria Granade & Mr. James Granade	Ms. Kimberly Hallatt	Ms. Cindy Hops	Laren & Randal Jones	Christopher Koch
Kristin Elliott	Mr. Anthony Fleischmann	Mr. & Mrs. William A. Geoghegan	Alan Grant	Aaron Halpern	Ms. Mandana Hormozi	Noel J. Jordan	Dr. Douglas Koch
The Philip Lee Ellis & Elizabeth B. Ellis Foundation	Malin & Chris Fletcher	Mrs. Virginia Germann	Mr. Frank C. Graves & Mrs. Christine Dugan	Mr. & Mrs. Michael Hamm	Susie Horns	Susan G. Jorgensen	Peter Kogan
Dr. & Mrs. Richard Ellis	Dr. & Mrs. James L. Foght	Dr. Pierre Greeff & Mrs. Dinah Greeff	Allyne D. Greco	Ariella Hanker	Ms. Lauren A. Horwitz	Nancy Josephs	Mr. & Mrs. Michael Kohler
Mrs. Priscilla A. Elwell & Mr. Richard O. Miller	Ms. Shirley Foreman	Kathy Green	Tara Greco	Kevin Hannon	Dick Hoskins	Sam Josi	Ms. Victoria Kohler
Lillian Emmons	Kyle Foscatto	Bob Greenawalt & Beth Brock	Dr. Pierre Greeff & Mrs. Dinah Greeff	Mr. Thor Hanson	Holly E Hoting	Lese Joslyn	Gerald A. & Karen A. Kolschowsky Foundation, Inc.
Mr. & Mrs. Donald Epstein	Elena Foster	Jaclyn Greenberg	Mr. Gordon Getty	Mr. Thor Hanson	Ms. Caroline Houser	Mrs. Judith M. Joy	Ms. Madelon Kominic
Mr. Kenneth M. Erickson	Fountains of Success Inc.		Jeanie Gibbs	Gideon Harbour	Vanessa Hranitz	JP Morgan Chase Foundation	Mr. Richard P. Kraft
Daniel Evans	Dawn Fournier		Rikki Gilbert	Mrs. Romayne A. Hardy	Wenying Hua	Hazel & Julian Judelman	Robert Kremer
	Ms. Jane G. Fouser		Ms. Susan Gilbert	JoAnn & Alan Harley	Mr. Theodor Huber	Justgiving	Ms. Carol Krieger
	Patrick Frame & Sheila Norman		Mr. James Gilligan	Ms. Carrie Hartmann	Mr. William J. Huck	Mr. Steven Kadish	Michael & Susan Krieger
				Roger Hartwell	Pamela & Brian Hudson	Grace Kadoya	Mr. C. S. Krieh & Dr. Pamela S. Gronemeyer
				Ms. Patricia Gay Hass	The Hulitar Family Foundation	Ms. Leslie J. Kahan	Patrick Kriser
				Mr. Ronald G. Hazelton	Ms. Britton Hunter	Kaiser Permanente Community Giving Campaign	Sandra Kunsberg
				Mrs. Patricia G. Hecker, Hecker Family Charitable Foundation	Dr. Raye C. Hurwitz M.D.	Dr. Lloyd & Dr. Susan Kannenberg	Sean Kurian
				Mr. Richard P. & Mrs. Gail H. Hecmanczuk	Patt & Rick Husted	Gary Kaplan	Mrs. Sandra Kurkky
				Ms. June E. Heilman	Haley Huxley	Warren J. Kaplan	Mr. Daniel Lachman
				Urban Foundation	William Iaconetti	Mrs. & Mr. Kathy Karas	Ms. Leanne Lachman
				Melinda Helmick	IBM Corporation Matching Grants Program	Ms. Ona M. Karasa	Mr. Marcos C. Ladeira
				Mr. David Helt	PC Imle	Lawrence Kasanoff	Mary Lou L. Lafler
				Ms. Barbara J. Henoach	Mr. Gaylord Ingersoll	Ms. Frances C. Kaspar	Sheppard Lake
				Ms. Diane Henry	Ms. Nancy C. Issel-Mayes	Mrs. Carol A. Kauffman	Patricia Lakner

“The African Wildlife Foundation is doing phenomenal work in fighting for defenseless animals and preserving our environmental heritage that is key for life on our planet.”

VISHVA AND MANJUL DIXIT

Kaushik Lakshminarayanan	Nancy Low	Mr. Carl McGill	Ellie Moran	Jonathan Packer & Eunsung Cho	Shelley Jo Pozez	The John A. Rodger Foundation	Ms. Kaye W. Scoggin
Martha Lam	Penelope Lowe	Patricia S. McGinnis	Martin Moran	Hosahalli Padmash	Mr. Sheldon Praiser	Ms. Joanne P. Rodriguez	Ms. Roxanne Scott
Caitlin Lamb	Ms. Jolene Lu	Ms. Louise McGregor	Michael Moretti	Eliot W. Paine	Mrs. & Mr. Carol Price	Marjorie & Richard Rogalski	Trish Scott
Bill Lambert	Dan & Christine Ludlow	John McKenna & Carol Campbell	Ms. Beverly Morgan	Paradise Wildlife Park	Claire Proffitt	Mr. Gay Rogers	Theodore Scourles
Peter & Deborah Lamm	Mr. & Mrs. Douglas S. Luke	Michael J. McKenzie	Mrs. Katharine B. Morgan	Hemal Parekh	Vivian Pyle & Anthony Anemone	Howard Rosen	Sean Scully
Dr. Paul Lampert	Dr. Robin Lustig	Duncan F. McLaughen	Robert B. Morgan	Mr. Brainard W. Parker III	Ms. Linda Quest	Susan Julia Ross & Gary L. Waddington M.D.	George Seger
Mr. & Mrs. Gary D. Landers	Mr. Eric Lutkin	Mr. & Mrs. Marshall McLaughlin	John & Tashia Morgridge	Jacqueline F. Patterson	R C Charitable Foundation	Ms. Jessica D. Rostoker	Mr. Keith R. Sendall
James Lang	Marjorie Lyon	Ms. Christine McLaughlin	Ms. Linda Morris	Paulson Family Charitable Fund	James Ragan	Ms. Joan Roudenbush	Archana Shah
John Lango	The Lyons Family	Bruce & Eleanor McLear	Lynn Morrison	Paulson Charitable Foundation	Ms. Maya Rainey	Rouse Family Foundation	Dr. AJ Shankar & Ms. Rebekah Sexton
Karen Langston	Timothy Lyons	Mr. & Mrs. Mark McNabb	Richard Morrison	PayPal Giving Fund UK	Ms. Sandra A. Rakestraw	Ms. Megan J. Rowe & Mr. David J. Blank	Arnold Shapiro & Karen MacKain
John Largay	Mr. Elliott Mackle	Ms. Sally O. McVeigh	Margie Morton	Eric Peacock	Leanne Ramsey	Mark & Beth Ruben	Joe & Nancy Sharkey
Ms. Patti Larkins	Anirudh Madabhushi	Laurence Meadows	Ms. Linda Moyer	Ms. Victoria Peet	Mr. Robert Ramsey	Mr. & Mrs. John A. Ruckes	Jane Sheldon
Ms. Karen Larsen	Mr. Gopal N. Madabhushi	Medtronic Foundation Volunteer Grant Program	Ms. Kelly A. Moylan	Ms. Carol L. Penner	Tyler Rattner	Karen Greenberg & Richard Rudman	Marshall & Jane Sheldon
Allan R. & Jeanne Larson	John S. Madigan	Mr. Gilbert Meehan	Caroline Mulcahy	Ms. Victoria C. Perizzolo	Mr. Arthur Ravenel Jr.	Ms. Elizabeth Ruml	Ms. Erin Shield
The Robert J. Laskowski Foundation	Mr. & Mrs. James D. Mair	Dr. Hooman Melamed	Dr. Michael Mundt	Mr. Gregg Perkin	Dr. Gordon R. Ray M.D.	Laura & Joseph Rushton	Anthony Shih
Catherine Lau	John Malcolm	The Melling Family Foundation	Alex Nabit	Henry S. Perkins	Bayard Rea	Margaret Rust Ph.D.	Winifred Shima
Dominique Claude Lavoisier	Shiyoe S. Malinasky	Susan Mellman	Ms. Janet L. Nace	Edward L. & Slocumb H. Perry	Alexandra Reed	John & Carol Rutherford	Christopher & Claire Shoales
Mrs. Susan Leahy	Ms. Marion L. Mann	Dr. Richard Melsheimer & Ms. Cynthia L. Kring	Mr. & Mrs. William T. Naftel	The Todd & Lydia Peter Charitable Fund	Mr. & Mrs. William S. Reed	M. D. Rutledge	Ms. Robyn Shreiber
Jessica Leão	Emily Manning	Mr. Barry Mendelson	Ms. Sharon J. Navratil & Mr. Thomas N. Vacar	Mr. Geoffrey F. Peters	Ms. Monique Regard	David Ryan	Mr. Richard J. & Mrs. Jill T. Sideman
Dorothy Lee	Edward & Elizabeth Mansfield	Janis & Alan Menken	Mr. & Mrs. James S. Neish	Ms. Jeana L. Petersen	Kathy Reichs	Maria Ryan	Dr. Caren Siehl
Patrice Lee	Cynthia A Marez	Dr. R. M. Mésavage	Ms. Linda L. Nicholes & Dr. Howard E. Stein	Emma Petoia	Camey Reid	Ms. Benita Sachs	Ms. Nancy M. Simerly
Mr. Tom Lee & Mrs. Elizabeth P. Lovtang	Mr. Scott & Mrs. Joyce Marhoefer	Mr. Daniel F. Metcalf & Ms. Kathy J. Peacock	The Nickerson-Clark Charitable Fund	Dana Petre-Miller	Margie & Bill Reid	Dustin Saiidi	Michael & Buffy Simoni
Mr. Robert Legnini	Gary Markotich	Mr. & Mrs. George W. Meyer	Barbara Niederkofler	Eleni Petrow	Michael & Tatiana Reiff	Mr. & Mrs. William Salot	Sir Edmond B.V.
Ms. Zheindl Lehner	Mr. Jan Markowski	Ms. Erica Michaels	Mr. Michael & Mrs. Stephani Niemi	Elizabeth Peyton	Mr. Tom Reifsnnyder & Mrs. Lily T. Im	Jeanne Salvatore	Ken & Jacqueline Sirlin
Ms. Patricia Leighfield	Dr. R. M. Mésavage	Paul Milkey	Liliia Nilova	Mrs. Gail Peyton	Rita Reilly	Elie Samuel	Ms. Florence Siroka
Gloriene Lesmeister	Mr. Daniel F. Metcalf & Ms. Kathy J. Peacock	Robert Miller	Mr. & Ms. David A. Northrop	John Pfersdorf	Renewal Funds Management Company LTD.	Guy Sanan	Andrea Sirota
Nina Gail Levitt	Mr. & Mrs. George W. Meyer	Teriann Mahony Miller & Nicholas Miller	Ms. Erika Norwood	Pfizer Foundation Matching Gift Program	Mr. Eric P. Repanshek	Ms. Anna Sanchez	Ms. Gloria J. Slagle
Dr. Roger Lewin	Ms. Erica Michaels	Ms. Valerie C. Mills	Ms. Esther M. Novak	PG&E Corporation Campaign For The Community	Kathleen Rezendes	Ms. Sibyl Sanford	Mr. John B. Slater
Erika Lewis	Ronald, Carol, & Dana Martin	Mr. Lyle S. Mindlin	Mark & Vickie Nysether	Mr. Shaun Philippart	Ms. Michelle Rhea	Ms. Patricia Santos	Leslie Small
Jeffrey & Anita Liebman	Ronald, Carol, & Dana Martin	Minerva	Mr. Andreas Ohl & Mrs. Laurie O'Byrne	John Pfersdorf	Ms. Megan Rhodehamel	Mr. Deryl Santosuosso	Mr. Steve Smart & Mr. Javier Barreto
Dr. Abbie B. Liel Ph.D.	Kathleen & Steve Martinek	Jonathan Mintzer	John & Dorothy Oehler	Pfizer Foundation Matching Gift Program	Mr. Arthur Rice	John & Linda Sardone	Mr. & Mrs. Angus F. Smith
Mr. & Mrs. John Light	Robert Miller	Mr. & Mrs. Larry Mitchell	The J & L Oehrl Family Fund	PG&E Corporation Campaign For The Community	Ms. Georgene B. Richaud	Mrs. Helen Savitzky	Mrs. Emily Smith & Mr. Agnus Smith
Elizabeth Lindgren	Teriann Mahony Miller & Nicholas Miller	Ms. Michael F. & Ms. Susan K. Mokelke	Ms. Pamela A. Okano	Mr. Shaun Philippart	Ms. Robin C. Ried & Mr. Christopher H. Staudt	Mr. Michael V. Scalzo	Mr. Justin P. Smith
Ms. Laurie G. Lindner	Ms. Valerie C. Mills	Mr. Donald Molony	Gail Okeefe	John Pfersdorf	Mr. & Mrs. Garry Riggs	Timothy & Anne Schaffner	Lesley Smith
Lindsey Walker Family Fund	Mr. Lyle S. Mindlin	Nancy A. Mondock	Mr. Marcus Oliver	Pfizer Foundation Matching Gift Program	Ms. Linda Rimbach	Irene Schaper	Dr. Mark S. Smith & Dr. Maxine R. Harris
Ms. Patricia A. Lintala	Ms. Margaret S. Maurin	Ruth Monhanram	Ms. Leslie O'Loughlin	PG&E Corporation Campaign For The Community	Mr. Lawrence T. Ring	Mrs. Lorraine Schapiro	Robin Smith
Deborah Lipman	Ms. Julianne Maurseth	Mr. & Mrs. Craig Monson	Cheyenne & Richard Olson	Mr. Shaun Philippart	Ms. Nancy A. Ritzenthaler & Mr. Albert L. Odmark	Gloria G. & Karl F. Schlaepfer	W. Kelly Smith
Anne Little	Ms. Linda Mayer	Douglas Montgomery & Matthew Hudson	Mr. Gilbert Omenn	John Pfersdorf	Dick Roberts	Murray Joseph Schluchter	Mrs. Esther A. Snowden
Richard & Fran Little	Ms. Beverlee Mc Grath	William & Margot S. Moomaw	Ms. Jean Oppenheimer	Pfizer Foundation Matching Gift Program	Ms. Diane Robins	C. Schmidt	Katherine Snowden
Mr. Jon Lloyd	Mr. & Mrs. John McAdoo	Ms. Carol Moore	Laurie Oriel	PG&E Corporation Campaign For The Community	The Familia Robinson Foundation	Dr. Witney Schneidman	Mr. Ronald E. Snyder
Elizabeth Lindgren	Ms. Catherine C. McCabe & Mr. Steven D. Helm	Gregory Moore	Ms. Patricia Ormsbee	Mr. Shaun Philippart	Mrs. Marilyn Robinson	Martha Schultz	Mr. & Mrs. Jeffrey M. Spatz
Ms. Laurie G. Lindner	Julie Mattson	Mr. Timothy Moore	Ruth Ellen Outlaw	John Pfersdorf	Ms. Linda K. Pierce	Ms. K. Schwab	Society of the Transfiguration
Lindsey Walker Family Fund	Ms. Margaret S. Maurin		Jan Owens-Martinez & Steven Martinez	Pfizer Foundation Matching Gift Program	Ms. Robin C. Ried & Mr. Christopher H. Staudt	Karin Schwab	Mr. & Mrs. Jeffrey M. Spatz
Ms. Patricia A. Lintala	Ms. Julianne Maurseth		Ms. Diane C. Pace	PG&E Corporation Campaign For The Community	Mr. & Mrs. Garry Riggs	Irene & Jeffrey Schwall	Bev Spector & Ken Lipson
Deborah Lipman	Ms. Linda Mayer			Mr. Shaun Philippart	Ms. Linda Rimbach	Shirley Scofield	Ms. Nancy Spool
Anne Little	Ms. Beverlee Mc Grath			John Pfersdorf	Mr. Lawrence T. Ring		
Richard & Fran Little	Mr. & Mrs. John McAdoo			Pfizer Foundation Matching Gift Program	Ms. Nancy A. Ritzenthaler & Mr. Albert L. Odmark		
Mr. Jon Lloyd	Ms. Catherine C. McCabe & Mr. Steven D. Helm			PG&E Corporation Campaign For The Community	Dick Roberts		
Elizabeth Lindgren	Julie Mattson			Mr. Shaun Philippart	Ms. Diane Robins		
Ms. Laurie G. Lindner	Ms. Margaret S. Maurin			John Pfersdorf	The Familia Robinson Foundation		
Lindsey Walker Family Fund	Ms. Julianne Maurseth			Pfizer Foundation Matching Gift Program	Mrs. Marilyn Robinson		
Ms. Patricia A. Lintala	Ms. Linda Mayer			PG&E Corporation Campaign For The Community	Ms. Linda Rimbach		
Deborah Lipman	Ms. Beverlee Mc Grath			Mr. Shaun Philippart	Mr. Lawrence T. Ring		
Anne Little	Mr. & Mrs. John McAdoo			John Pfersdorf	Ms. Nancy A. Ritzenthaler & Mr. Albert L. Odmark		
Richard & Fran Little	Ms. Catherine C. McCabe & Mr. Steven D. Helm			Pfizer Foundation Matching Gift Program	Dick Roberts		
Mr. Jon Lloyd	Elisabeth McCarthy			PG&E Corporation Campaign For The Community	Ms. Diane Robins		
Elizabeth Lindgren	Rebecca J. McCarthy			Mr. Shaun Philippart	The Familia Robinson Foundation		
Ms. Laurie G. Lindner	Virginia McCulloh & Nancy Kohlreiter			John Pfersdorf	Mrs. Marilyn Robinson		
Lindsey Walker Family Fund	Ms. Julianne Maurseth			Pfizer Foundation Matching Gift Program	Ms. Linda Rimbach		
Ms. Patricia A. Lintala	Ms. Linda Mayer			PG&E Corporation Campaign For The Community	Mr. Lawrence T. Ring		
Deborah Lipman	Ms. Beverlee Mc Grath			Mr. Shaun Philippart	Ms. Nancy A. Ritzenthaler & Mr. Albert L. Odmark		
Anne Little	Mr. & Mrs. John McAdoo			John Pfersdorf	Dick Roberts		
Richard & Fran Little	Ms. Catherine C. McCabe & Mr. Steven D. Helm			Pfizer Foundation Matching Gift Program	Ms. Diane Robins		
Mr. Jon Lloyd	Elisabeth McCarthy			PG&E Corporation Campaign For The Community	The Familia Robinson Foundation		
Elizabeth Lindgren	Rebecca J. McCarthy			Mr. Shaun Philippart	Mrs. Marilyn Robinson		
Ms. Laurie G. Lindner	Virginia McCulloh & Nancy Kohlreiter			John Pfersdorf	Ms. Linda Rimbach		
Lindsey Walker Family Fund	Ms. Julianne Maurseth			Pfizer Foundation Matching Gift Program	Mr. Lawrence T. Ring		
Ms. Patricia A. Lintala	Ms. Linda Mayer			PG&E Corporation Campaign For The Community	Ms. Nancy A. Ritzenthaler & Mr. Albert L. Odmark		
Deborah Lipman	Ms. Beverlee Mc Grath			Mr. Shaun Philippart	Dick Roberts		
Anne Little	Mr. & Mrs. John McAdoo			John Pfersdorf	Ms. Diane Robins		
Richard & Fran Little	Ms. Catherine C. McCabe & Mr. Steven D. Helm			Pfizer Foundation Matching Gift Program	The Familia Robinson Foundation		
Mr. Jon Lloyd	Elisabeth McCarthy			PG&E Corporation Campaign For The Community	Mrs. Marilyn Robinson		
Elizabeth Lindgren	Rebecca J. McCarthy			Mr. Shaun Philippart	Ms. Linda Rimbach		
Ms. Laurie G. Lindner	Virginia McCulloh & Nancy Kohlreiter			John Pfersdorf	Mr. Lawrence T. Ring		
Lindsey Walker Family Fund	Ms. Julianne Maurseth			Pfizer Foundation Matching Gift Program	Ms. Nancy A. Ritzenthaler & Mr. Albert L. Odmark		
Ms. Patricia A. Lintala	Ms. Linda Mayer			PG&E Corporation Campaign For The Community	Dick Roberts		
Deborah Lipman	Ms. Beverlee Mc Grath			Mr. Shaun Philippart	Ms. Diane Robins		
Anne Little	Mr. & Mrs. John McAdoo			John Pfersdorf	The Familia Robinson Foundation		
Richard & Fran Little	Ms. Catherine C. McCabe & Mr. Steven D. Helm			Pfizer Foundation Matching Gift Program	Mrs. Marilyn Robinson		
Mr. Jon Lloyd	Elisabeth McCarthy			PG&E Corporation Campaign For The Community	Ms. Linda Rimbach		
Elizabeth Lindgren	Rebecca J. McCarthy			Mr. Shaun Philippart	Mr. Lawrence T. Ring		
Ms. Laurie G. Lindner	Virginia McCulloh & Nancy Kohlreiter			John Pfersdorf	Ms. Nancy A. Ritzenthaler & Mr. Albert L. Odmark		
Lindsey Walker Family Fund	Ms. Julianne Maurseth			Pfizer Foundation Matching Gift Program	Dick Roberts		
Ms. Patricia A. Lintala	Ms. Linda Mayer			PG&E Corporation Campaign For The Community	Ms. Diane Robins		
Deborah Lipman	Ms. Beverlee Mc Grath			Mr. Shaun Philippart	The Familia Robinson Foundation		
Anne Little	Mr. & Mrs. John McAdoo			John Pfersdorf	Mrs. Marilyn Robinson		
Richard & Fran Little	Ms. Catherine C. McCabe & Mr. Steven D. Helm			Pfizer Foundation Matching Gift Program	Ms. Linda Rimbach		
Mr. Jon Lloyd	Elisabeth McCarthy			PG&E Corporation Campaign For The Community	Mr. Lawrence T. Ring		
Elizabeth Lindgren	Rebecca J. McCarthy			Mr. Shaun Philippart	Ms. Nancy A. Ritzenthaler & Mr. Albert L. Odmark		
Ms. Laurie G. Lindner	Virginia McCulloh & Nancy Kohlreiter			John Pfersdorf	Dick Roberts		
Lindsey Walker Family Fund	Ms. Julianne Maurseth			Pfizer Foundation Matching Gift Program	Ms. Diane Robins		
Ms. Patricia A. Lintala	Ms. Linda Mayer			PG&E Corporation Campaign For The Community	The Familia Robinson Foundation		
Deborah Lipman	Ms. Beverlee Mc Grath			Mr. Shaun Philippart	Mrs. Marilyn Robinson		
Anne Little	Mr. & Mrs. John McAdoo			John Pfersdorf	Ms. Linda Rimbach		
Richard & Fran Little	Ms. Catherine C. McCabe & Mr. Steven D. Helm			Pfizer Foundation Matching Gift Program	Mr. Lawrence T. Ring		
Mr. Jon Lloyd	Elisabeth McCarthy			PG&E Corporation Campaign For The Community	Ms. Nancy A. Ritzenthaler & Mr. Albert L. Odmark		
Elizabeth Lindgren	Rebecca J. McCarthy			Mr. Shaun Philippart	Dick Roberts		
Ms. Laurie G. Lindner	Virginia McCulloh & Nancy Kohlreiter			John Pfersdorf	Ms. Diane Robins		
Lindsey Walker Family Fund	Ms. Julianne Maurseth			Pfizer Foundation Matching Gift Program	The Familia Robinson Foundation		
Ms. Patricia A. Lintala	Ms. Linda Mayer			PG&E Corporation Campaign For The Community	Mrs. Marilyn Robinson		
Deborah Lipman	Ms. Beverlee Mc Grath			Mr. Shaun Philippart	Ms. Linda Rimbach		
Anne Little	Mr. & Mrs. John McAdoo			John Pfersdorf	Mr. Lawrence T. Ring		
Richard & Fran Little	Ms. Catherine C. McCabe & Mr. Steven D. Helm			Pfizer Foundation Matching Gift Program	Ms. Nancy A. Ritzenthaler & Mr. Albert L. Odmark		
Mr. Jon Lloyd	Elisabeth McCarthy			PG&E Corporation Campaign For The Community	Dick Roberts		
Elizabeth Lindgren	Rebecca J. McCarthy			Mr. Shaun Philippart	Ms. Diane Robins		
Ms. Laurie G. Lindner	Virginia McCulloh & Nancy Kohlreiter			John Pfersdorf	The Familia Robinson Foundation		
Lindsey Walker Family Fund	Ms. Julianne Maurseth			Pfizer Foundation Matching Gift Program	Mrs. Marilyn Robinson		
Ms. Patricia A. Lintala	Ms. Linda Mayer			PG&E Corporation Campaign For The Community	Ms. Linda Rimbach		
Deborah Lipman	Ms. Beverlee Mc Grath			Mr. Shaun Philippart	Mr. Lawrence T. Ring		
Anne Little	Mr. & Mrs. John McAdoo			John Pfersdorf	Ms. Nancy A. Ritzenthaler & Mr. Albert L. Odmark		
Richard & Fran Little	Ms. Catherine C. McCabe & Mr. Steven D. Helm			Pfizer Foundation Matching Gift Program	Dick Roberts		
Mr. Jon Lloyd	Elisabeth McCarthy			PG&E Corporation Campaign For The Community	Ms. Diane Robins		
Elizabeth Lindgren	Rebecca J. McCarthy			Mr. Shaun Philippart	The Familia Robinson Foundation		
Ms. Laurie G. Lindner	Virginia McCulloh & Nancy Kohlreiter			John Pfersdorf	Mrs. Marilyn Robinson		
Lindsey Walker Family Fund	Ms. Julianne Maurseth			Pfizer Foundation Matching Gift Program	Ms. Linda Rimbach		
Ms. Patricia A. Lintala	Ms. Linda Mayer			PG&E Corporation Campaign For The Community	Mr. Lawrence T. Ring		
Deborah Lipman	Ms. Beverlee Mc Grath			Mr. Shaun Philippart	Ms. Nancy A. Ritzenthaler & Mr. Albert L. Odmark		
Anne Little	Mr. & Mrs. John McAdoo			John Pfersdorf	Dick Roberts		
Richard & Fran Little	Ms. Catherine C. McCabe & Mr. Steven D. Helm			Pfizer Foundation Matching Gift Program	Ms. Diane Robins		
Mr. Jon Lloyd	Elisabeth McCarthy			PG&E Corporation Campaign For The Community	The Familia Robinson Foundation		
Elizabeth Lindgren	Rebecca J. McCarthy			Mr. Shaun Philippart	Mrs. Marilyn Robinson		
Ms. Laurie G. Lindner	Virginia McCulloh & Nancy Kohlreiter			John Pfersdorf	Ms. Linda Rimbach		
Lindsey Walker Family Fund	Ms. Julianne Maurseth			Pfizer Foundation Matching Gift Program	Mr. Lawrence T. Ring		
Ms. Patricia A. Lintala	Ms. Linda Mayer			PG&E Corporation Campaign For The Community	Ms. Nancy A. Ritzenthaler & Mr. Albert L. Odmark		
Deborah Lipman	Ms. Beverlee Mc Grath			Mr. Shaun Philippart	Dick Roberts		
Anne Little	Mr. & Mrs. John McAdoo			John Pfersdorf	Ms. Diane Robins		
Richard & Fran Little	Ms. Catherine C. McCabe & Mr. Steven D. Helm			Pfizer Foundation Matching Gift Program	The Familia Robinson Foundation		
Mr. Jon Lloyd	Elisabeth McCarthy			PG&E Corporation Campaign For The Community	Mrs. Marilyn Robinson		
Elizabeth Lindgren	Rebecca J. McCarthy			Mr. Shaun Philippart	Ms. Linda Rimbach		
Ms. Laurie G. Lindner	Virginia McCulloh & Nancy Kohlreiter			John Pfersdorf	Mr. Lawrence T. Ring		
Lindsey Walker Family Fund	Ms. Julianne Maurseth			Pfizer Foundation Matching Gift Program	Ms. Nancy A. Ritzenthaler & Mr. Albert L. Odmark		
Ms. Patricia A. Lintala	Ms. Linda Mayer			PG&E Corporation Campaign For The Community	Dick Roberts		
Deborah Lipman	Ms. Beverlee Mc Grath			Mr. Shaun Philippart	Ms. Diane Robins		
Anne Little	Mr. & Mrs. John McAdoo			John Pfersdorf	The Familia Robinson Foundation		
Richard & Fran Little	Ms. Catherine C. McCabe & Mr. Steven D. Helm			Pfizer Foundation Matching Gift Program	Mrs. Marilyn Robinson		
Mr. Jon Lloyd	Elisabeth McCarthy			PG&E Corporation Campaign For The Community	Ms. Linda Rimbach		
Elizabeth Lindgren	Rebecca J. McCarthy			Mr. Shaun Philippart	Mr. Lawrence T. Ring		
Ms. Laurie G. Lindner	Virginia McCulloh & Nancy Kohlreiter			John Pfersdorf	Ms. Nancy A. Ritzenthaler & Mr. Albert L. Odmark		
Lindsey Walker Family Fund	Ms. Julianne Maurseth			Pfizer Foundation Matching Gift Program	Dick Roberts		
Ms. Patricia A. Lintala	Ms. Linda Mayer			PG&E Corporation Campaign For The Community	Ms. Diane Robins		
Deborah Lipman	Ms. Beverlee Mc Grath			Mr. Shaun Philippart	The Familia Robinson Foundation		
Anne Little	Mr. & Mrs. John McAdoo			John Pfersdorf	Mrs. Marilyn Robinson		
Richard & Fran Little	Ms. Catherine C. McCabe & Mr. Steven D. Helm			Pfizer Foundation Matching Gift Program	Ms. Linda Rimbach		
Mr. Jon Lloyd	Elisabeth McCarthy			PG&E Corporation Campaign For The Community	Mr. Lawrence T. Ring		
Elizabeth Lindgren	Rebecca J. McCarthy						

Ann Springgate	Julie Thomas	Mr. Jack Walker	Mr. Jay Williams Jr.
Srividya Srinivasan	Mr. James L. Thompson	Jan Walker	Ms. Leslie Williams
Stahl Family Charitable Foundation	Tichard Thompson	Ms. Laurelia Walker	Mrs. Stephanie Williams
Pamela C. Stallings	Mr. & Mrs. Stuart H. Thomsen	Marcia Walker	Mrs. Suzanne H. Williams
Sheryl Steinberg Collins Foundation	Jacqueline & John Thomson	Mr. Paul Walker	Ms. Linda L. Willis
Lisa Stevens & Craig Sholley	Ms. Laura Tiktinsky	Ms. Shannon M. Wall	Mr. Jack Wilson
Frances W. Stevenson	Mr. & Mrs. Jim Tolonen	The Robert A. Waller Foundation	Dr. & Mrs. Clayton Wimberly M.D.
Ms. Faith Stone	Mr. Michael A. Toner	Martha M. Walsh & Peter B. Bloland	Susan Winnall
Charles L. & Carolyn J. Stratton Fund	Ms. Helen Torelli	Ms. Marion T. Ward	Winnick Family Foundation
Robert Strosser	Paul F. Torrence	Ms. Josephine Wardle	Nancy Corwith Hamill Winter
Joanna Sturm	Ms. Jennifer Tost	Judith & James Warner – Boulder, Colorado	Ms. Beth Winters
Julie Summers	Mr. & Mrs. Gordon T. Tracz	Diana J. Washburn	Patricia Winters
Lisa Li-Hwa Sun	Enrique Trelles	Janet Trettner & Eugene Stoltzfus	Ms. Sally Wittier
Ms. Lisa Swayze	Mr. C. D. Trexler Esq.	Caroline Tse	Joan Wofford
Shea Sweeney	Gernine Tuckner	Ms. Peggy Turner	Kristen M. & John L. Wolfe
Dr. & Mrs. Mathew P. Swerdlow	Ms. Dennis & Sue Umshler	United Way Greater Toronto	Ms. Margaret Wood
Sheila C. Swigert	United Way of Central New Mexico	United Way Worldwide	Michael A. Wood
Robin Swope	Lalith Uragoda	Mr. Richard D. Urell	Mr. Alan C. Woodbury
Mr. Tom J. Sybrant	Mr. Richard D. Urell	Gary Vahey	Ms. Diana G. Wortham
Sylvia V. Taborelli	Mr. Ray Valadez	Ms. Helena Van Dierendonck	Alan & Penny J. Wortman
Mrs. Betty F. Talbert	Ms. Valerie Van Griethuysen	Clare Van Dorp	Mr. & Mrs. Paul Wright
Ms. Gretchen L. Tatsch	Van Itallie Foundation Inc.	Frits & Letty VanderLinden	Ms. Molly Wu & Mr. Mark Molloy
Dr. Marianne L. Tauber	Mr. George Varsam	Suparna Vashisht & Manish Goel	Robert Wyer & Rashmi Adaval
Ms. Beverly L. Taylor	Mr. & Mrs. Mark D. Vigren	Ashok & Rama Vora	John Yaist
Bob C. Taylor	Carol Wageman	Wags & Menace Make a Difference Foundation	Chul Yang
Brenda Taylor	Ms. Jill Willbanks		Mrs. Emily Yoffe & Mr. John Mintz
Charleen Taylor			Ms. Leslee E. York & Mr. Dylan S. Lee
Mr. Jeff Taylor & Mrs. Sherl Taylor			Mr. Peter D. & Mrs. Adrienne S. Yoshihara
Mrs. Margaretta J. Taylor			Mr. Gordon Young
Ms. Lois Teich			Wendi Young
Joseph Testa			Mr. Mark P. Zaitlin
Ms. Usha B. Thakrar			Charles & Ann Zellmer
The Big Cat Sanctuary			The Stanley Shalom Zielony Foundation
Mr. Brian Theyel			Charlotte Ziems
Joyce Thibodeaux			Scottie Zimmerman
John Thomann & Stanton Schnepf			Mr. Iwan Zwarts

Estate Giving

Anonymous	Ethel Bowen	J. Morse Cavender	Robert Feuer
Wendy Appel	Helen J. Brown	Sonja Ann Chamides	Graham F. Fowler
John R. & J. Evangelyn Boice	Gloria M. Castillo	Roger C. Conant	Remigia A. Foy

Rosemarie Gatehouse	Shirley Jane Kaub	Joseph T. Pollock	Marianna Sielicki
Evelyn Gaul	Charles L. Layne	George M. Pollock	Paul Simon
Erin Gloria Gaye Gavin-Sweedden	Lynn E. Lewis	Sandra A. Putala	Ruth Staub
Richard J. Glass	Ruth Longardner	Theodora Raven	Nadine B. Stearns
Sandra Jean Grijalva	Susan McKenzie	Terry Roberts	Dorothy D. Thorndike
Nancy Jane Hamilton	Patricia Louise Minnick	Frank J. Rus	Diane Wheelock
Pat Healy Fund	Steven A. Minter	Keith Harris Schienberg	Elaine White
Dorothy S. Hines	Jo Ann Moore	Betty L. Schnaar	Alec Wilder
Mary E. Johnson	Richard W. Oertel	Judith Sedlow	Dana Alison Wyckoff

Kilimanjaro Society

Anonymous (434)	Gloria J. Austin	Frances & Richard Bohn Trust	John & Theresa Cederholm
A Grateful Donor	Barbara Babcock	Surya Bolom	Bonny & Ian Chick
Paula L. Adams	Joy Baker	Sherrri Breyer	David Cholak & Debbie Decampus
Carla Alford	Marcia Balbus	James R. & Suzanne Meintzer Brock	Christina Clayton & Stanley Kolber
Gwen M. Allen	John & Valerie Bance	Elizabeth Dabney Brown	Payson & Kim Coleman
Jeane Ann Allen	Linda M. Barker	Jane Ann Brown	Patricia Collier
Helen F. Anderson	Stephanie Barko	David & Joanne L. Brunetti	Joyce D. Cology
Linda Andrews	Robert G. & Ann S. Barrett	Mrs. Waltraud Buckland	Ann & Dougal Crowe
Marjorie A. Ariano	Mr. & Mrs. Richmond S. Bates	Deborah G. Buckler	Sally Cumine
Susan Arias	Gary Baxel	William & Ann Buckmaster	Jan Cunningham
Jan Armstrong	C. Becktel	Dr. Cynthia R. Burns	Louis Brendan Curran
Carol Arnold & Andrew J. Moore	Patrick J. Bergin, Ph.D.	Jane S. Burtnett	Ms. Susan M. Curry
Cynthia A. Arnold & Peter O. Stahl	Mr. Robin Berkeley, OBE	Wallace M. Cackowski	Anne Cusic - Tracks/USA
Kathy Arnold	Candace Bertelson	Irene Cannon-Geary	Gail B. Dallmann & Duane A. Swenson
Larry & Kathryn Augustyniak	Lela Bishop	Laura Carbone & Mitchell Watsky	
	Debbie & Michael Bloom		

“My wife Joyce and I are regular contributors to AWF and have included the organization in our estate plans, for one simple reason: AWF is doing an exceptional job in helping African wildlife thrive throughout the continent both now, and for future generations. Their programs work, not only because of how they help the wildlife, but also benefit the human communities whose support is so vital to the future of wildlife on the continent”

RICHARD GALLAGHER
KILIMANJARO SOCIETY

Dianne C. Dana
David & Betts Dann
Toni M. Davison
Nancy Davlantes
Ms. Paula Dax
Joyce Dobkins
Katie H. Doyle & Richard Cunningham
Joyce Eckman
Mr. Jeffrey A. Eiffler
Dr. B. B. Eshbaugh
Ms. Heather A. Evans
Peter Evans & Liz Dow
V. A. Ewton
Gloria J. Fenner
Mitchell Field
Sharon Edel Finzer
Lisa S. Firestone
Charles P. Sweet & Ronnie S. Fischer
June L. Fletcher
Barbara L. Flowers
Kirsty Forgie
Jane G. Fouser
Ruth E. Francis
Harriette M. Frank
Ms. Constance C. Frazier
Paul & Florine Frisch
Mr. Paul Gagliano
Rick & Joyce Gallagher
Barbara Gallardo
Adele Garvin
Jane W. Gaston
William & Cheryl Geffon
The Gideon Animal Foundation
Susan Gilbert
Dr. Linda L. Giles
Ms. Susan Glasbrenner
Richard P. Glasser
Joyce A. Godwin
Carol A. Goff
Dolores & Henry Goldman
Susan M. Gonzalez
Stephen P. Govan
Beth Brock & Bob Greenawalt
Kari Grengs
Tim & Devon Guard
Heather & Paul Haaga

Robert & Martha Hall
Michael & JoAnn Hamm
The Hansons
Susan M. Harding
Romayne Adams Hardy
John & Melanie Harkness
Barb Hauser
Mrs. Mae B. Haynes
Kristine Heine
Ronald Helmecci
Gail & Leonard Hendricks
Linda J. Hill
Mary Lou Hill
Dr. Sanford & Ann Hochman
Margaret Hodges
Jeffrey M. Holstein, RN, C
Mark & Barbara Holtzman
John K. & Janice L. Howie
Susi Huelsmeyer-Sinay
Connie M. Huggett
Roger W. Hutchings
Judy & Cal Jaeger
William & Janet James
Allen L. Jefferis
Carol E. Jones & David Johns
Kathryn C. Johnson & Scott R. Berry
Hon. Kristina M. Johnson, Ph.D.
Vicki Johnson
Carol Johnston
Deena & Steven Jones
M.S. Jones
Tracy Lee Jones
Bonnie Jupiter
Sharon Kantanen
Karen M. Kaplan
Steven & Migette Kaup
P. Ann Kaupp
Pauline E. Kayes
Ann Peckham Keenan
Mr. Dennis J. Keller
Constance A. Kelsey
Dr. Jeremy Kemp-Symonds
Hugh & Wendy Kendrick
Robert E. King
Madelon Komicic
Jennifer A. K. Kraus
Ken Kreinheder

Marcy & Jeffrey Krinsk
Linda E. La Roche
Mary Ann Rao Lancaster
Andrea Lapsley
Ms. Bonnie Larson
Cheryl Lechtanski
Drs. Hans & Judith Remy Leder
Patricia C. Lee
Ms. Zheindl Lehner
Deborah B. Leiderman
Cheryl & Kevin Leslie
Chalsa M. Loo, PH.D.
Mr. Alfred J. Lopena
George Loukides & Sam M. Tomlin
Kirk P. Lovenbury
Dwight & Kimberly Lowell
Malcolm & Trish Lund
Susanne Madden & Dr. Thomas Webb
Sandra Malmstrom
Lauren H. Marmor
Keith Martin
David Mason
Teri K. Mauler
Margaret S. Maurin
Captain & Mrs. Earl E. Maxfield, Jr.
Steven & Ursula McAllister
Ruth McCloud
Ms. Nancy A. McDaniel
Mr. & Mrs. Henry P. McIntosh, IV
Sally McMahan
Kristine Meek
Mrs. Wanita M. Meenan
Tony Melchior
Dr. R. Matilde Mésavage
Mr. Lindsay M. Mickles
Robert J. Miller
Queenelle Minet
Nancy Moffett
Barbara Moritsch & Tom Nichols
Henriette Morris
Jeff & Shay Morris
Allen S. Moss
Harriet Moss & Paul Rosenberg
Mr. Hassan A. Sachedina

Ms. Phyllis F. Mount
Beth Mowry
Linda M. Moyer
Kelly A. Moylan
Sherry H. Mullett
Ms. Mary B. Napoli
Lester H. Nathan
Victoria K. & Victoria M. Neill
Vicki & James Nordskog
Anne & John Norris
John & Dorothy Oehler
Sue Orloff
Dr. & Mrs. Samuel M. Peacock, Jr.
David Peckman & Michael Baffa
Jon & Analee Perica
Ms. Barbara R. Perry
Jennifer Plombon
Jeffrey & Yvonne Pommerville
Jonathan Porter & Paige Best
Myrna Barbara Pototsky
Paul & Karen Povey
Kathy D. Preziosi
Claire B.M. Proffitt
Linda Prusik
Patrick J. Raftery
Sandra A. Rakestraw
Viswanath Rao & Katheryn Small
Julie M. Reilly
Ms. Anna K. Rentz
Howard D. Richards
Nancy R. Richards Esq.
Crystal A. Ricker
Ida Katherine Rigby, Ph.D.
Jennifer Ritman & Andrew Brinkworth
Nina Tanner Robbins
Laurie Robinson & Sheldon Krantz
Murray S. Robinson
Tia Nolan Roddy
Stuart Rosenburg, DVM
Sandra Clungeon Rosencrans
Richard & Jamie Roussel
Jacqueline S. Russell
Lynne G. Russert
Margaret Rust, Ph.D.
Mr. Hassan A. Sachedina

Cynthia M. Perry & Richard E. Sayers, Jr.
Anne & Joel S. Schecter
Betsy Schiff
Gloria & Karl Schlaepfer
Denise Schlener
Jan & Mel Schockner
Irene & Jeffrey Schwall
Melynnique & Edward Seabrook
Sandra Pitts Seidenfeld
Margaret Seneshen
Margareta Shakerdge Cottington
Susan H. Shane
Anahit Shaterian
Marshall & Jane Sheldon
Yvonne T. Sherman
Gloria A. Shidler
Frederick & Mary Lou Shirley
Mr. & Mrs. Christopher L. Shoales
Leon & Fern Siegel
Ken & Jacqueline Sirlin
Bruce L. Smith
Ms. Deborah A. Smith
Drs. Harlan & Elizabeth Smith
Vivian C. Sontag
Marjorie A. Spence
Rita A. Stapulonis
Michael Steamer
Kenneth D. Stephens
Lisa Stevens & Craig Sholley
Nancy M. Stevens
Peter & Carol Stewart
Sarah B. Stewart
Mrs. & Mr. Shelby J. Stifle
Leila Maw Straus

Ingrid M. Sunzenauer & Ralph C. Wright
Evelyn F. Sweigart
Duchess A. Swift
Sylvia V. Taborelli
Bob Taylor
Patricia M. Taylor
Mr. Walter Tingle & Mrs. Thea Holmes
Mark & Annabelle Travis
Jackie Turner
Ruth Elliot Turner
John H. Tyler
Dennis & Sue Umshler
Stephen Urbrock
Shelley Varga
Ms. Barbara von Hoffmann
Sharron Voorhees
Robert & Jean Walraven
Mr. & Mrs. Christopher C. Warren
Roxanne Warren
Laura A. & Wayne J. Wathen
Valerie Watt
Karen Weber
Matthew T. Weir
Mrs. Phyllis J. Whitney-Tabor
Keith & Janice Wiggers
Dr. & Mrs. Kenneth Wildrick
Dorothy Courtngage Wilson
Anna E. Winand
Mrs. Margaret Winston
Marge Wright
R. Michael Wright
Susan E. Yager & Robert S. Berkowitz
Steven Zeluck

AWF MANAGEMENT TEAM

Kaddu Sebunya
Chief Executive Officer

Craig R. Sholley
Senior Vice President

Eric Coppenger
Chief of Staff

Charly Facheux
Senior Vice President,
Conservation Strategy,
Impact and Learning

Beth Foster
Vice President,
Communications and Marketing

Richard Holly
Chief Financial Officer

Lindsay Hance Kosnik
Senior Vice President,
Development & Public Engagement

Frederick Kwame Kumah
Vice President,
Global Leadership

Philip Muruthi
Vice President,
Conservation Science
& Planning

Elizabeth Opee
Director, Human
Resources & Culture

Alistair Pole
Senior Director,
Project Management
& Partnerships



Contributed Services

Flipboard China IBM
Google Wilderness Safaris

The list on this and preceding pages reflects gifts received during AWF's 2021 fiscal year, July 1, 2020–June 30, 2021.

© 2022 AFRICAN WILDLIFE FOUNDATION

THE AFRICAN WILDLIFE FOUNDATION IS A NON-PROFIT 501(C)(3) TAX-EXEMPT CORPORATION IN THE UNITED STATES. AWF'S IRS TAX ID NUMBER IS 52-0781390. ALL CONTRIBUTIONS TO THE AFRICAN WILDLIFE FOUNDATION ARE TAX-DEDUCTIBLE TO THE EXTENT ALLOWED BY LAW.

OUR SINCEREST THANKS TO THE PHOTOGRAPHERS WHO HAVE DONATED THEIR IMAGES FOR USE IN THIS REPORT.

AWF BY THE NUMBERS

PAN-AFRICAN



80%

Elephant populations supported by AWF that are stable or increasing



408

AWF-trained sniffer dog finds since 2014, representing immeasurable gains in trafficking deterrence



34

Finds made by AWF-trained Canines for Conservation units in FY21



2,063

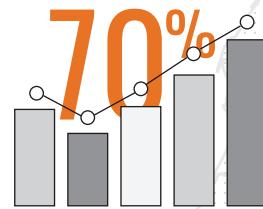
Law enforcement and other personnel (rangers, prosecutors, judges, and more) trained in enhanced wildlife law enforcement and prosecution since 2015



9,000

Entries to AWF's first annual Benjamin Mkapa African Wildlife Photography Awards in 2021

CAMEROON



Percent revenue increase (2020-2021) for Cameroonian women in AWF non-timber forest enterprise project.

\$28,633



Amount 70 women from local cooperatives in Cameroon's Campo Ma'an made from the sales of non-timber forest products, an initiative supported by AWF

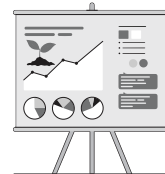
DEMOCRATIC REPUBLIC OF CONGO



540

People sensitized to sustainable ag techniques in DRC's Bili-Uele region in 2020

270



Members of the DRC Lomako community whom AWF trained in small-business skills over three months as an alternative to unsustainable natural-resource exploitation

BOTSWANA



900

Vehicles that AWF-trained canine detection teams searched in Botswana between July and September 2020

2,800



Items of luggage AWF-trained canine detection teams searched in Botswana between July and September 2020

RWANDA



8,552

Protected areas in Africa, all of which would benefit from proposed Pan-African Conservation Trust (A-PACT), an initiative AWF is leading



Orgs in African CSOs Biodiversity Alliance, which AWF formed to link civil society groups into global policy processes

80

2,000+

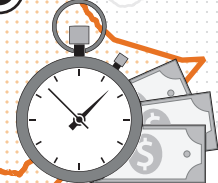
Expected # of delegates to the Africa Protected Areas Congress



100%

Africa's 54 countries to be at the 1st Africa Protected Areas Congress (APAC), which AWF and partners are co-convening and co-hosting

ETHIOPIA



2,322

Individuals who helped maintain Simien Mountains National Park as part of a cash-for-work program benefiting the park and local families during COVID-related tourism stoppages.

KENYA

39



Suspects arrested as result of AWF-supported KWS undercover wildlife-trafficking investigation in early 2021



0

Rhinos poached in the last year at sites where AWF directly invested in anti-poaching in Kenya

TANZANIA



2,089

Flights searched by AWF-trained canine detection teams in Tanzania in FY21

600,000

Trees planted over three years by Kilombero communities as part of AWF green-growth program



110 kilograms

Amount of raw ivory Tanzanian canine teams helped recover during undercover investigations



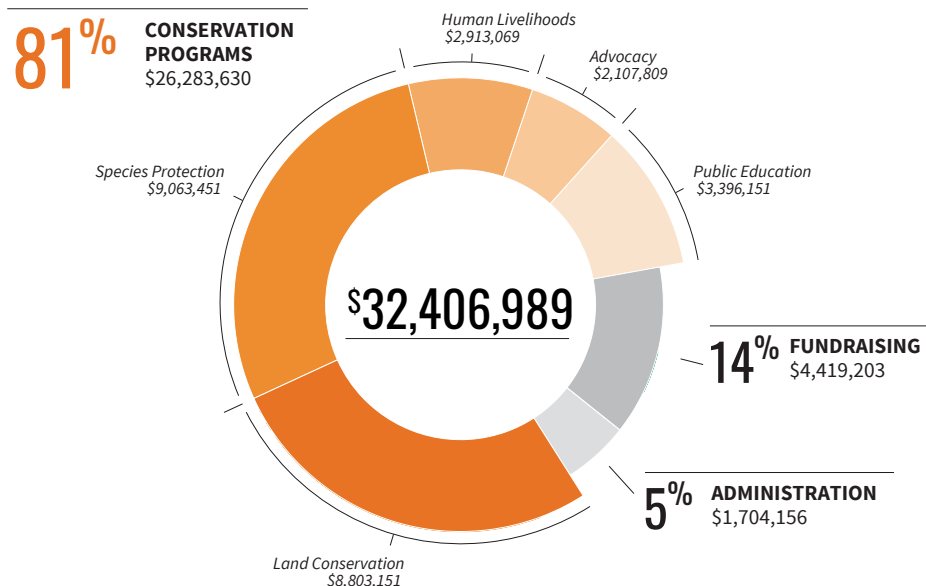
700

Vehicles AWF-trained canine detection teams searched in Tanzania in FY21

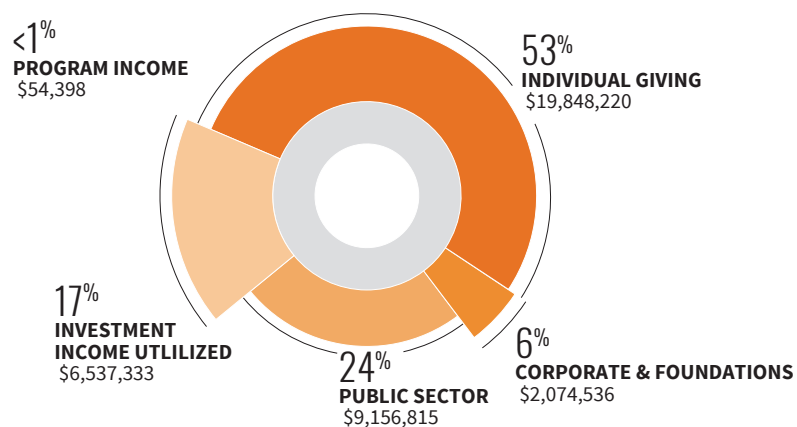
FINANCIALS

Since AWF's beginnings 60 years ago, we've been a responsible steward of your contributions in service to Africa's wildlife and wild lands.

Organizational Efficiency



Revenue Breakout



Summary of activities for the year ended June 30, 2021

	UNRESTRICTED	RESTRICTED	TOTAL
OPERATING REVENUE			
Gifts from individuals	17,082,866	2,765,354	19,848,220
Corporate & foundation support	746,284	1,256,020	2,002,304
Public-sector grants	9,156,815	-	9,156,815
Program income	54,398	-	54,398
In-kind contributions	72,232	-	72,232
Restricted net assets utilized	6,428,861	(6,428,861)	-
Total Operating Revenue	33,541,456	(2,407,487)	31,133,969
OPERATING EXPENSES			
Conservation programs	20,779,670	-	20,779,670
Education & outreach	5,503,960	-	5,503,960
<i>Total program expenses</i>	<i>26,283,630</i>	<i>-</i>	<i>26,283,630</i>
Finance & administration	1,704,156	-	1,704,156
Fundraising	4,419,203	-	4,419,203
<i>Total supporting services</i>	<i>6,123,359</i>	<i>-</i>	<i>6,123,359</i>
Total Operating Expenses	32,406,989	-	32,406,989
Non-operating activities	602,337	-	602,337
Net investment income	5,074,058	860,938	5,934,996
Total Non-Operating Activities	5,676,395	860,938	6,537,333
Change in Net Assets	6,810,862	(1,546,549)	5,264,313

Financial position as of June 30, 2021

	2021	2020
Cash and equivalents	3,643,888	5,595,065
Investments	33,759,808	31,019,447
Gifts and grants receivable	9,523,240	6,430,794
Accounts receivable	110,872	115,597
Prepaid & other assets	949,670	739,417
Impact loans receivable	511,576	684,454
Property & equipment, net of depreciation	4,139,827	4,123,355
Rights of Use asset	3,957,321	4,363,588
Total Assets	56,596,202	53,071,717
Accounts payable & accrued expenses	2,191,161	2,118,036
Refundable grant advances	552,823	1,012,195
Loan payable	-	802,337
Lease liabilities	5,500,325	6,042,452
Other liabilities	148,357	157,528
Total Liabilities	8,392,666	10,132,548
Unrestricted net assets	8,392,666	8,392,666
Restricted net assets	35,327,664	28,516,802
Total Net Assets	48,203,536	42,939,223
Total Liabilities & Net Assets	56,596,202	53,071,717



AWF OFFICES

KENYA

Headquarters

AWF Conservation Centre
Ngong Road, Karen
P.O Box 310, 00502
Nairobi, Kenya
+254 711063000

Field Office:

Voi Town

CAMEROON

Rue No. 1729
Yaoundé, Cameroon
+237 699035962

Field Offices:

Campo Ma'an
Dja Fauna Reserve
Faro National Park

DEMOCRATIC REPUBLIC OF CONGO

Avenue Colonel
Lukusa N° 16
Apartment 3 A, 3è niveau
Immeuble les Palmiers
Kinshasa, Gombe, DRC
+243 812628204
+243 817160263
+243 97957143

Field Offices:

*Bili-Uele Protected
Area Complex*
*Maringa-Lopori-Wamba
Landscape*

ETHIOPIA

Simien Mountains
Landscape Project Office,
P.O. Box 1.
Debark, Ethiopia

NIGER

Commune 2 quartier
Dar Es Salam
Rue du Nouveau Pavé
Niamey, Niger
+227 96990772
+227 96461113

RWANDA

Kigali Heights Building
2nd Floor
KG 7 Ave Kigali, Rwanda
+250 788309960

TANZANIA

Manyara Ranch
P.O Box 16749
Arusha, Tanzania
+255 754826255

Field Offices:

Kilombero
Mbeya

UGANDA

Plot 5, Katali Rise Naguru,
P.O. Box 37346
Kampala, Uganda
P.O Box 37346
+256 393266652
+256 393366653/4

Field Offices:

Kidepo Valley
Murchison Falls

ZIMBABWE

Unit D Delken Complex
Mt Pleasant Business Park
Harare, Zimbabwe
+263 772572062

Field Offices:

Chidrezi
Morangora

USA

1100 New Jersey Avenue SE
Suite 900
Washington, DC 20003
+1 202 939 3333

UK

Berkeley Suite
35 Berkeley Square
Mayfair
London W1J 5BF
+020 7692 4012

SWITZERLAND

C/o IUCN
28 rue Mauverney
Gland 1196, Switzerland
+41 229990146

*We're extremely grateful for your contributions
and participation in the AWF community; both are
vital to our efforts to ensure wildlife and wild lands
thrive in modern Africa.*

*If you're not yet a supporter but feel inspired by our work,
please know there are numerous ways to help. You can sign
up to become a monthly contributor, work with our staff to
arrange a legacy gift, donate in honor of a loved one, and
more. Please visit www.awf.org/support-us to learn more.*

*Together we can accomplish so much for Africa's wildlife,
wild lands, and communities in need.*
